

## Product datasheet for **TA361575**

### WIPI2 Rabbit Polyclonal Antibody

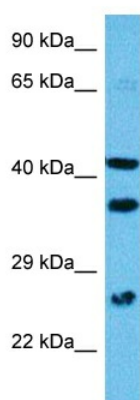
#### Product data:

Product Type:	Primary Antibodies
Applications:	WB
Reactivity:	Human
Host:	Rabbit
Clonality:	Polyclonal
Immunogen:	The immunogen is a synthetic peptide directed towards the N terminal region of human WIPI2
Specificity:	<b>Expected reactivity:</b> Human
Formulation:	Liquid. Purified antibody supplied in 1x PBS buffer with 0.09% (w/v) sodium azide and 2% sucrose. <i>Note that this product is shipped as lyophilized powder to China customers.</i>
Concentration:	lot specific
Purification:	Affinity purified
Conjugation:	Unconjugated
Storage:	For short term use, store at 2-8°C up to 1 week. For long term storage, store at -20°C in small aliquots to prevent freeze-thaw cycles.
Stability:	Shelf life: one year from despatch.
Predicted Protein Size:	48 kDa
Gene Name:	WD repeat domain, phosphoinositide interacting 2
Database Link:	<a href="#">NP_001028690.1</a> <a href="#">Entrez Gene 26100 Human</a> <a href="#">Q9Y4P8-6</a>
Background:	WD40 repeat proteins are key components of many essential biologic functions. They regulate the assembly of multiprotein complexes by presenting a beta-propeller platform for simultaneous and reversible protein-protein interactions. Members of the WIPI subfamily of WD40 repeat proteins, such as WIPI2, have a 7-bladed propeller structure and contain a conserved motif for interaction with phospholipids.
Synonyms:	Atg21; CGI-50; DKFZP434J154; DKFZp686P02188; FLJ12979; FLJ14217; FLJ42984; WIPI-2



[View online »](#)

## Product images:



Host: Rabbit  
Target Name: WIPI2  
Sample Type: HeLa Cell Lysate  
Antibody Dilution: 1.0 $\mu$ g/ml

Host: Rabbit  
Target Name: WIPI2  
Sample Tissue: Human HeLa Whole Cell lysates  
Antibody Dilution: 1  $\mu$ g/ml