

Product datasheet for **TA361573**

SMAP1 Rabbit Polyclonal Antibody

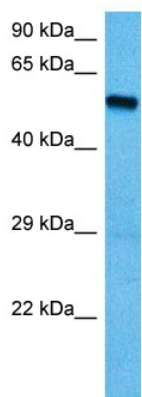
Product data:

Product Type:	Primary Antibodies
Applications:	WB
Reactivity:	Human
Host:	Rabbit
Clonality:	Polyclonal
Immunogen:	The immunogen is a synthetic peptide directed towards the middle region of human SMAP1
Specificity:	Expected reactivity: Human
Formulation:	Liquid. Purified antibody supplied in 1x PBS buffer with 0.09% (w/v) sodium azide and 2% sucrose. <i>Note that this product is shipped as lyophilized powder to China customers.</i>
Concentration:	lot specific
Purification:	Affinity purified
Conjugation:	Unconjugated
Storage:	For short term use, store at 2-8°C up to 1 week. For long term storage, store at -20°C in small aliquots to prevent freeze-thaw cycles.
Stability:	Shelf life: one year from despatch.
Predicted Protein Size:	51 kDa
Gene Name:	small ArfGAP 1
Database Link:	NP_001037770.1 Entrez Gene 60682 Human Q8IYB5
Background:	The protein encoded by this gene is similar to the mouse stromal membrane-associated protein-1. This similarity suggests that this human gene product is also a type II membrane glycoprotein involved in the erythropoietic stimulatory activity of stromal cells. Alternate splicing results in multiple transcript variants encoding different isoforms.
Synonyms:	FLJ13159; FLJ42245; GCUNC45; SMAP-1; UNC45A
Protein Pathways:	Endocytosis



[View online »](#)

Product images:



Host: Rabbit
Target Name: SMAP1
Sample Type: Leiomyosarcoma Tumor Lysate
Antibody Dilution: 1.0 μ g/ml

Host: Rabbit
Target Name: SMAP1
Sample Tissue: Human Leiomyosarcoma Tumor lysates
Antibody Dilution: 1 μ g/ml