

## Product datasheet for **TA361571**

### VAM1 (MPP6) Rabbit Polyclonal Antibody

#### Product data:

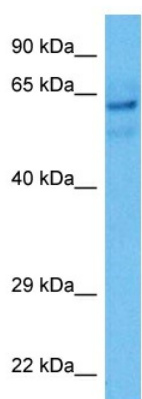
Product Type:	Primary Antibodies
Applications:	WB
Reactivity:	Human
Host:	Rabbit
Clonality:	Polyclonal
Immunogen:	The immunogen is a synthetic peptide directed towards the middle region of human MPP6
Specificity:	<b>Expected reactivity:</b> Human
Formulation:	Liquid. Purified antibody supplied in 1x PBS buffer with 0.09% (w/v) sodium azide and 2% sucrose. <i>Note that this product is shipped as lyophilized powder to China customers.</i>
Concentration:	lot specific
Purification:	Affinity purified
Conjugation:	Unconjugated
Storage:	For short term use, store at 2-8°C up to 1 week. For long term storage, store at -20°C in small aliquots to prevent freeze-thaw cycles.
Stability:	Shelf life: one year from despatch.
Predicted Protein Size:	59 kDa
Gene Name:	membrane palmitoylated protein 6
Database Link:	<a href="#">NP_001289966.1</a> <a href="#">Entrez Gene 51678 Human</a> <a href="#">Q9NZW5</a>
Background:	Members of the peripheral membrane-associated guanylate kinase (MAGUK) family function in tumor suppression and receptor clustering by forming multiprotein complexes containing distinct sets of transmembrane, cytoskeletal, and cytoplasmic signaling proteins. All MAGUKs contain a PDZ-SH3-GUK core and are divided into 4 subfamilies, DLG-like, ZO1-like, p55-like, and LIN2-like), based on their size and the presence of additional domains. MPP6 is a member of the p55-like MAGUK subfamily.
Synonyms:	p55T; PALS2; VAM-1; VAM1



[View online »](#)

Protein Families: Druggable Genome, Stem cell - Pluripotency

### Product images:



Host: Rabbit  
Target Name: MPP6  
Sample Type: Ovary Tumor Lysate  
Antibody Dilution: 1.0 $\mu$ g/ml

Host: Rabbit  
Target Name: MPP6  
Sample Tissue: Human Ovary Tumor lysates  
Antibody Dilution: 1 $\mu$ g/ml