

## Product datasheet for **TA361567**

### DPEP1 Rabbit Polyclonal Antibody

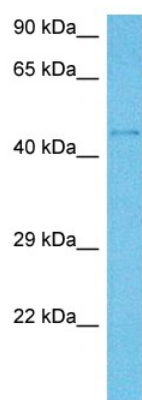
#### Product data:

Product Type:	Primary Antibodies
Applications:	WB
Reactivity:	Human
Host:	Rabbit
Clonality:	Polyclonal
Immunogen:	The immunogen is a synthetic peptide directed towards the middle region of human DPEP1
Specificity:	<b>Expected reactivity:</b> Human
Formulation:	Liquid. Purified antibody supplied in 1x PBS buffer with 0.09% (w/v) sodium azide and 2% sucrose. <i>Note that this product is shipped as lyophilized powder to China customers.</i>
Concentration:	lot specific
Purification:	Affinity purified
Conjugation:	Unconjugated
Storage:	For short term use, store at 2-8°C up to 1 week. For long term storage, store at -20°C in small aliquots to prevent freeze-thaw cycles.
Stability:	Shelf life: one year from despatch.
Predicted Protein Size:	45 kDa
Gene Name:	dipeptidase 1 (renal)
Database Link:	<a href="#">NP_001121613.1</a> <a href="#">Entrez Gene 1800 Human P16444</a>
Background:	The protein encoded by this gene is a kidney membrane enzyme involved in the metabolism of glutathione and other similar proteins by dipeptide hydrolysis. The encoded protein is known to regulate leukotriene activity by catalyzing the conversion of leukotriene D4 to leukotriene E4. This protein uses zinc as a cofactor and acts as a disulfide-linked homodimer. Two transcript variants encoding the same protein have been found for this gene.
Synonyms:	Dehydropeptidase-I; hRDP; MBD1; MDP; OTTHUMP00000175356; RDP
Protein Families:	Protease



[View online »](#)

## Product images:



Host: Rabbit  
Target Name: DPEP1  
Sample Type: DLD1 Cell Lysate  
Antibody Dilution: 1.0 $\mu$ g/ml

Host: Rabbit  
Target Name: DPEP1  
Sample Tissue: Human DLD1 Whole Cell lysates  
Antibody Dilution: 1 $\mu$ g/ml