

## Product datasheet for **TA361560**

### PLSCR3 Rabbit Polyclonal Antibody

#### Product data:

Product Type:	Primary Antibodies
Applications:	WB
Reactivity:	Human
Host:	Rabbit
Clonality:	Polyclonal
Immunogen:	The immunogen is a synthetic peptide directed towards the N terminal region of human PLSCR3
Specificity:	<b>Expected reactivity:</b> Human
Formulation:	Liquid. Purified antibody supplied in 1x PBS buffer with 0.09% (w/v) sodium azide and 2% sucrose. <i>Note that this product is shipped as lyophilized powder to China customers.</i>
Concentration:	lot specific
Purification:	Affinity purified
Conjugation:	Unconjugated
Storage:	For short term use, store at 2-8°C up to 1 week. For long term storage, store at -20°C in small aliquots to prevent freeze-thaw cycles.
Stability:	Shelf life: one year from despatch.
Predicted Protein Size:	32 kDa
Gene Name:	phospholipid scramblase 3
Database Link:	<a href="#">NP_001188505.1</a> <a href="#">Entrez Gene 57048 Human</a> <a href="#">Q9NRY6</a>



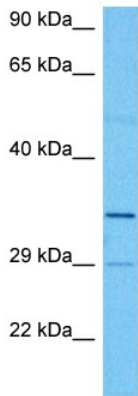
[View online »](#)

**Background:**

May mediate accelerated ATP-independent bidirectional transbilayer migration of phospholipids upon binding calcium ions that results in a loss of phospholipid asymmetry in the plasma membrane. May play a central role in the initiation of fibrin clot formation, in the activation of mast cells and in the recognition of apoptotic and injured cells by the reticuloendothelial system. Seems to play a role in apoptosis, through translocation of cardiolipin from the inner to the outer mitochondrial membrane which promotes BID recruitment and enhances tBid-induced mitochondrial damages.

**Synonyms:**

PLSCR3

**Product images:**

Host: Rabbit  
Target Name: PLSCR3  
Sample Type: LN18 Cell Lysate  
Antibody Dilution: 1.0 $\mu$ g/ml

Host: Rabbit  
Target Name: PLSCR3  
Sample Tissue: Human LN18 Whole Cell lysates  
Antibody Dilution: 1 $\mu$ g/ml