

## Product datasheet for **TA361559**

### PCGF1 Rabbit Polyclonal Antibody

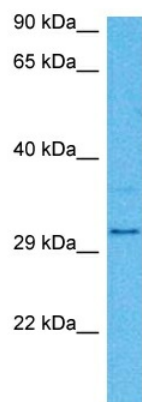
#### Product data:

Product Type:	Primary Antibodies
Applications:	WB
Reactivity:	Human
Host:	Rabbit
Clonality:	Polyclonal
Immunogen:	The immunogen is a synthetic peptide directed towards the middle region of human PCGF1
Specificity:	<b>Expected reactivity:</b> Human
Formulation:	Liquid. Purified antibody supplied in 1x PBS buffer with 0.09% (w/v) sodium azide and 2% sucrose. <i>Note that this product is shipped as lyophilized powder to China customers.</i>
Concentration:	lot specific
Purification:	Affinity purified
Conjugation:	Unconjugated
Storage:	For short term use, store at 2-8°C up to 1 week. For long term storage, store at -20°C in small aliquots to prevent freeze-thaw cycles.
Stability:	Shelf life: one year from despatch.
Predicted Protein Size:	30 kDa
Gene Name:	polycomb group ring finger 1
Database Link:	<a href="#">NP_116062.2</a> <a href="#">Entrez Gene 84759 Human</a> <a href="#">Q9BSM1</a>
Background:	PCGF1 is a mammalian homolog of the Drosophila polycomb group genes, which act as transcriptional repressors to regulate anterior-posterior patterning in early embryonic development. See also PCGF2.
Synonyms:	2010002K04Rik; FLJ43754; MGC10882; NSPC1; RNF3A-2; RNF68



[View online »](#)

## Product images:



Host: Rabbit  
Target Name: PCGF1  
Sample Type: HCT116 Cell Lysate  
Antibody Dilution: 1.0 $\mu$ g/ml

Host: Rabbit  
Target Name: PCGF1  
Sample Tissue: Human HCT116 Whole Cell  
lysates  
Antibody Dilution: 1 $\mu$ g/ml