

Product datasheet for **TA361557**

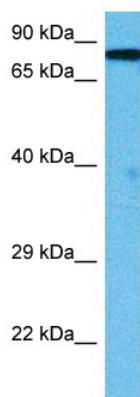
CTNNAL1 Rabbit Polyclonal Antibody

Product data:

Product Type:	Primary Antibodies
Applications:	WB
Reactivity:	Human
Host:	Rabbit
Clonality:	Polyclonal
Immunogen:	The immunogen is a synthetic peptide directed towards the N terminal region of human CTNNAL1
Specificity:	Expected reactivity: Human
Formulation:	Liquid. Purified antibody supplied in 1x PBS buffer with 0.09% (w/v) sodium azide and 2% sucrose. <i>Note that this product is shipped as lyophilized powder to China customers.</i>
Concentration:	lot specific
Purification:	Affinity purified
Conjugation:	Unconjugated
Storage:	For short term use, store at 2-8°C up to 1 week. For long term storage, store at -20°C in small aliquots to prevent freeze-thaw cycles.
Stability:	Shelf life: one year from despatch.
Predicted Protein Size:	80 kDa
Gene Name:	catenin alpha like 1
Database Link:	NP_001273903.1 Entrez Gene 8727 Human Q9UBT7
Background:	May modulate the Rho pathway signaling by providing a scaffold for the Lbc Rho guanine nucleotide exchange factor (ARHGEF1).
Synonyms:	ACRP; alpha-CATU; alpha-catulin; alpha2-catulin; CLLP; FLJ08121
Protein Families:	Druggable Genome



[View online »](#)

Product images:

Host: Rabbit

Target Name: CTNNAL1

Sample Type: Mesenchymoma Tumor Lysate

Antibody Dilution: 1.0 μ g/ml

Host: Rabbit

Target Name: CTNNAL1

Sample Tissue: Human Mesenchymoma Tumor lysates

Antibody Dilution: 1 μ g/ml