

Product datasheet for **TA361548**

Protein Phosphatase 1 beta (PPP1CB) Rabbit Polyclonal Antibody

Product data:

Product Type:	Primary Antibodies
Applications:	WB
Reactivity:	Human
Host:	Rabbit
Clonality:	Polyclonal
Immunogen:	The immunogen is a synthetic peptide directed towards the middle region of human PPP1CB
Specificity:	Expected reactivity: Human
Formulation:	Liquid. Purified antibody supplied in 1x PBS buffer with 0.09% (w/v) sodium azide and 2% sucrose. <i>Note that this product is shipped as lyophilized powder to China customers.</i>
Concentration:	lot specific
Purification:	Affinity purified
Conjugation:	Unconjugated
Storage:	For short term use, store at 2-8°C up to 1 week. For long term storage, store at -20°C in small aliquots to prevent freeze-thaw cycles.
Stability:	Shelf life: one year from despatch.
Predicted Protein Size:	35 kDa
Gene Name:	protein phosphatase 1 catalytic subunit beta
Database Link:	NP_002700.1 Entrez Gene 5500 Human P62140
Background:	The protein encoded by this gene is one of the three catalytic subunits of protein phosphatase 1 (PP1). PP1 is a serine/threonine specific protein phosphatase known to be involved in the regulation of a variety of cellular processes, such as cell division, glycogen metabolism, muscle contractility, protein synthesis, and HIV-1 viral transcription. Mouse studies suggest that PP1 functions as a suppressor of learning and memory. Two alternatively spliced transcript variants encoding distinct isoforms have been observed.
Synonyms:	MGC3672; OTTHUMP00000200968; PP-1B; PPP1CD

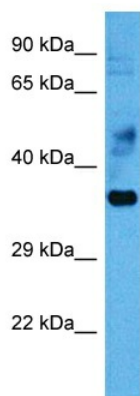


[View online »](#)

Protein Families: Druggable Genome, Phosphatase

Protein Pathways: Focal adhesion, Insulin signaling pathway, Long-term potentiation, Oocyte meiosis, Regulation of actin cytoskeleton, Vascular smooth muscle contraction

Product images:



Host: Rabbit
Target Name: PPP1CB
Sample Type: Mesenchymoma Tumor Lysate
Antibody Dilution: 1.0 μ g/ml

Host: Rabbit
Target Name: PPP1CB
Sample Tissue: Human Mesenchymoma Tumor lysates
Antibody Dilution: 1 ug/ml