

## Product datasheet for **TA361546**

### MTHFS Rabbit Polyclonal Antibody

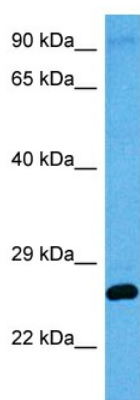
#### Product data:

Product Type:	Primary Antibodies
Applications:	WB
Reactivity:	Human
Host:	Rabbit
Clonality:	Polyclonal
Immunogen:	The immunogen is a synthetic peptide directed towards the middle region of human MTHFS
Specificity:	<b>Expected reactivity:</b> Human
Formulation:	Liquid. Purified antibody supplied in 1x PBS buffer with 0.09% (w/v) sodium azide and 2% sucrose. <i>Note that this product is shipped as lyophilized powder to China customers.</i>
Concentration:	lot specific
Purification:	Affinity purified
Conjugation:	Unconjugated
Storage:	For short term use, store at 2-8°C up to 1 week. For long term storage, store at -20°C in small aliquots to prevent freeze-thaw cycles.
Stability:	Shelf life: one year from despatch.
Predicted Protein Size:	23 kDa
Gene Name:	5,10-methenyltetrahydrofolate synthetase (5-formyltetrahydrofolate cyclo-ligase)
Database Link:	<a href="#">NP_001186687.1</a> <a href="#">Entrez Gene 10588 Human P49914</a>
Background:	The protein encoded by this gene is an enzyme that catalyzes the conversion of 5-formyltetrahydrofolate to 5,10-methenyltetrahydrofolate, a precursor of reduced folates involved in 1-carbon metabolism. An increased activity of the encoded protein can result in an increased folate turnover rate and folate depletion. Three transcript variants encoding two different isoforms have been found for this gene.
Synonyms:	FLJ30410; HsT19268
Protein Pathways:	Metabolic pathways, One carbon pool by folate



[View online »](#)

## Product images:



Host: Rabbit  
Target Name: MTHFS  
Sample Type: Lung Tumor Lysate  
Antibody Dilution: 1.0 $\mu$ g/ml

Host: Rabbit  
Target Name: MTHFS  
Sample Tissue: Human Lung Tumor lysates  
Antibody Dilution: 1 $\mu$ g/ml