

Product datasheet for **TA361544**

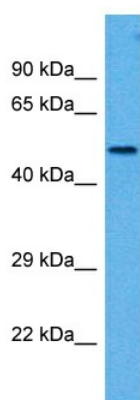
WIPI1 Rabbit Polyclonal Antibody

Product data:

Product Type:	Primary Antibodies
Applications:	WB
Reactivity:	Human
Host:	Rabbit
Clonality:	Polyclonal
Immunogen:	The immunogen is a synthetic peptide directed towards the middle region of human WIPI1
Specificity:	Expected reactivity: Human
Formulation:	Liquid. Purified antibody supplied in 1x PBS buffer with 0.09% (w/v) sodium azide and 2% sucrose. <i>Note that this product is shipped as lyophilized powder to China customers.</i>
Concentration:	lot specific
Purification:	Affinity purified
Conjugation:	Unconjugated
Storage:	For short term use, store at 2-8°C up to 1 week. For long term storage, store at -20°C in small aliquots to prevent freeze-thaw cycles.
Stability:	Shelf life: one year from despatch.
Predicted Protein Size:	49 kDa
Gene Name:	WD repeat domain, phosphoinositide interacting 1
Database Link:	NP_060453.3 Entrez Gene 55062 Human Q5MNZ9
Background:	This gene encodes a WD40 repeat protein. Members of the WD40 repeat family are key components of many essential biologic functions. They regulate the assembly of multiprotein complexes by presenting a beta-propeller platform for simultaneous and reversible protein-protein interactions. Members of the WIPI subfamily of WD40 repeat proteins have a 7-bladed propeller structure and contain a conserved motif for interaction with phospholipids. Alternative splicing results in multiple transcript variants.
Synonyms:	ATG18; FLJ10055; WIPI-1; WIPI49



[View online »](#)

Product images:

Host: Rabbit
Target Name: WIPI1
Sample Type: Jurkat Cell Lysate
Antibody Dilution: 1.0 μ g/ml

Host: Rabbit
Target Name: WIPI1
Sample Tissue: Human Jurkat Whole Cell lysates
Antibody Dilution: 1 μ g/ml