

Product datasheet for **TA361540**

DBR1 Rabbit Polyclonal Antibody

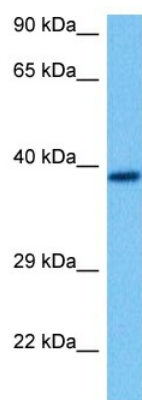
Product data:

Product Type:	Primary Antibodies
Applications:	WB
Reactivity:	Human
Host:	Rabbit
Clonality:	Polyclonal
Immunogen:	The immunogen is a synthetic peptide directed towards the middle region of Human DBR1
Specificity:	Expected reactivity: Human
Formulation:	Liquid. Purified antibody supplied in 1x PBS buffer with 0.09% (w/v) sodium azide and 2% sucrose. <i>Note that this product is shipped as lyophilized powder to China customers.</i>
Concentration:	lot specific
Purification:	Affinity purified
Conjugation:	Unconjugated
Storage:	For short term use, store at 2-8°C up to 1 week. For long term storage, store at -20°C in small aliquots to prevent freeze-thaw cycles.
Stability:	Shelf life: one year from despatch.
Predicted Protein Size:	35 kDa
Gene Name:	debranching RNA lariats 1
Database Link:	NP_057300.2 Entrez Gene 51163 Human Q9UK59-2
Background:	The protein encoded by this gene is an RNA lariat debranching enzyme that hydrolyzes 2'-5' prime branched phosphodiester bonds. The encoded protein specifically targets the bonds at the branch point of excised lariat intron RNA, converting them to linear molecules that are then degraded. This protein may also be involved in retroviral replication.
Synonyms:	DBR1



[View online »](#)

Product images:



Host: Rabbit
Target Name: DBR1
Sample Type: PC-3 Cell Lysate
Antibody Dilution: 1.0 μ g/ml

Host: Rabbit
Target Name: DBR1
Sample Tissue: Human PC-3 Whole Cell lysates
Antibody Dilution: 1 μ g/ml