

## Product datasheet for **TA361536**

### SLC6A20 Rabbit Polyclonal Antibody

#### Product data:

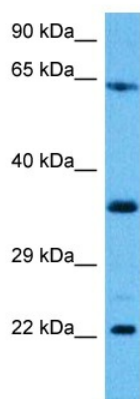
Product Type:	Primary Antibodies
Applications:	WB
Reactivity:	Human
Host:	Rabbit
Clonality:	Polyclonal
Immunogen:	The immunogen is a synthetic peptide directed towards the C terminal region of Human SLC6A20
Specificity:	<b>Expected reactivity:</b> Human
Formulation:	Liquid. Purified antibody supplied in 1x PBS buffer with 0.09% (w/v) sodium azide and 2% sucrose. <i>Note that this product is shipped as lyophilized powder to China customers.</i>
Concentration:	lot specific
Purification:	Affinity purified
Conjugation:	Unconjugated
Storage:	For short term use, store at 2-8°C up to 1 week. For long term storage, store at -20°C in small aliquots to prevent freeze-thaw cycles.
Stability:	Shelf life: one year from despatch.
Predicted Protein Size:	65 kDa
Gene Name:	solute carrier family 6 member 20
Database Link:	<a href="#">NP_064593.1</a> <a href="#">Entrez Gene 54716 Human</a> <a href="#">Q9NP91</a>
Background:	Transport of small hydrophilic substances across cell membranes is mediated by substrate-specific transporter proteins which have been classified into several families of related genes. The protein encoded by this gene is a member of the subgroup of transporter with unidentified substrates within the Na <sup>+</sup> and Cl <sup>-</sup> coupled transporter family. This gene is expressed in kidney, and its alternative splicing generates 2 transcript variants.
Synonyms:	MGC161475; OTTHUMP00000210181; SIT1; XT3; Xtrp3



[View online »](#)

Protein Families: Druggable Genome, Transmembrane

## Product images:



Host: Rabbit  
Target Name: SLC6A20  
Sample Type: LN18 Cell Lysate  
Antibody Dilution: 1.0µg/ml

Host: Rabbit  
Target Name: SLC6A20  
Sample Tissue: Human LN18 Whole Cell lysates  
Antibody Dilution: 1ug/ml