

Product datasheet for **TA361534**

AMPD2 Rabbit Polyclonal Antibody

Product data:

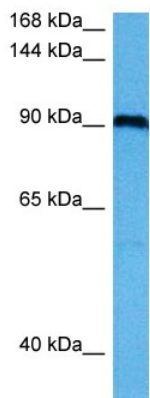
Product Type:	Primary Antibodies
Applications:	WB
Reactivity:	Human
Host:	Rabbit
Clonality:	Polyclonal
Immunogen:	The immunogen is a synthetic peptide directed towards the middle terminal region of human AMPD2
Specificity:	Expected reactivity: Human
Formulation:	Liquid. Purified antibody supplied in 1x PBS buffer with 0.09% (w/v) sodium azide and 2% sucrose. <i>Note that this product is shipped as lyophilized powder to China customers.</i>
Concentration:	lot specific
Purification:	Affinity purified
Conjugation:	Unconjugated
Storage:	For short term use, store at 2-8°C up to 1 week. For long term storage, store at -20°C in small aliquots to prevent freeze-thaw cycles.
Stability:	Shelf life: one year from despatch.
Predicted Protein Size:	93 kDa
Gene Name:	adenosine monophosphate deaminase 2
Database Link:	NP_001244289.1 Entrez Gene 271 Human Q01433-4
Background:	The protein encoded by this gene is important in purine metabolism by converting AMP to IMP. The encoded protein, which acts as a homotetramer, is one of three AMP deaminases found in mammals. Several transcript variants encoding different isoforms have been found for this gene.
Synonyms:	OTTHUMP00000013371
Protein Families:	Druggable Genome



[View online >](#)

Protein Pathways: Metabolic pathways, Purine metabolism

Product images:



Host: Rabbit
Target Name: AMPD2
Sample Type: MCF7 Cell Lysate
Antibody Dilution: 1.0 μ g/ml

Host: Rabbit
Target Name: AMPD2
Sample Tissue: Human MCF7 Whole Cell lysates
Antibody Dilution: 1 μ g/ml