

## Product datasheet for **TA361532**

### HYI Rabbit Polyclonal Antibody

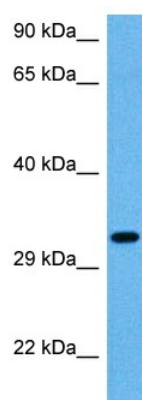
#### Product data:

Product Type:	Primary Antibodies
Applications:	WB
Reactivity:	Human
Host:	Rabbit
Clonality:	Polyclonal
Immunogen:	The immunogen is a synthetic peptide directed towards the middle terminal region of human HYI
Specificity:	<b>Expected reactivity:</b> Human
Formulation:	Liquid. Purified antibody supplied in 1x PBS buffer with 0.09% (w/v) sodium azide and 2% sucrose. <i>Note that this product is shipped as lyophilized powder to China customers.</i>
Concentration:	lot specific
Purification:	Affinity purified
Conjugation:	Unconjugated
Storage:	For short term use, store at 2-8°C up to 1 week. For long term storage, store at -20°C in small aliquots to prevent freeze-thaw cycles.
Stability:	Shelf life: one year from despatch.
Predicted Protein Size:	30 kDa
Gene Name:	hydroxypyruvate isomerase (putative)
Database Link:	<a href="#">NP_001177809.1</a> <a href="#">Entrez Gene 81888 Human</a> <a href="#">Q5T013</a>
Background:	This gene encodes a putative hydroxypyruvate isomerase, which likely catalyzes the conversion of hydroxypyruvate to 2-hydroxy-3-oxopropanoate, and may be involved in carbohydrate transport and metabolism. Alternatively spliced transcript variants encoding different isoforms have been found for this gene.
Synonyms:	HT036; MGC20767; OTTHUMP00000008689
Protein Pathways:	Glyoxylate and dicarboxylate metabolism, Metabolic pathways



[View online »](#)

## Product images:



Host: Rabbit  
Target Name: HYI  
Sample Type: HeLa Cell Lysate  
Antibody Dilution: 1.0 $\mu$ g/ml

Host: Rabbit  
Target Name: HYI  
Sample Tissue: Human HeLa Whole Cell lysates  
Antibody Dilution: 1 $\mu$ g/ml