

Product datasheet for **TA361531**

ERC2 Rabbit Polyclonal Antibody

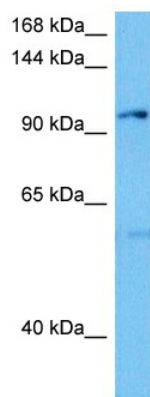
Product data:

Product Type:	Primary Antibodies
Applications:	WB
Reactivity:	Human
Host:	Rabbit
Clonality:	Polyclonal
Immunogen:	The immunogen is a synthetic peptide directed towards the C terminal region of human ERC2
Specificity:	Expected reactivity: Human
Formulation:	Liquid. Purified antibody supplied in 1x PBS buffer with 0.09% (w/v) sodium azide and 2% sucrose.
Concentration:	lot specific
Purification:	Affinity purified
Conjugation:	Unconjugated
Storage:	For short term use, store at 2-8°C up to 1 week. For long term storage, store at -20°C in small aliquots to prevent freeze-thaw cycles.
Stability:	Shelf life: one year from despatch.
Predicted Protein Size:	105 kDa
Gene Name:	ELKS/RAB6-interacting/CAST family member 2
Database Link:	NP_056391.1 Entrez Gene 26059 Human O15083
Background:	This gene encodes a protein that belongs to the Rab3-interacting molecule (RIM)-binding protein family. Members of this protein family form part of the cytomatrix at the active zone (CAZ) complex and function as regulators of neurotransmitter release. Alternative splicing results in multiple transcript variants.
Synonyms:	CAST; CAST1; ELKSL; KIAA0378; MGC133063; MGC133064; SPBC110; Spc110



[View online »](#)

Product images:



Host: Rabbit
Target Name: ERC2
Sample Type: DLD1 Cell Lysate
Antibody Dilution: 1.0 μ g/ml

Host: Rabbit
Target Name: ERC2
Sample Tissue: Human DLD1 Whole Cell lysates
Antibody Dilution: 1 μ g/ml