

## Product datasheet for TA361525

### ITPKB Rabbit Polyclonal Antibody

#### Product data:

Product Type:	Primary Antibodies
Applications:	WB
Reactivity:	Human
Host:	Rabbit
Clonality:	Polyclonal
Immunogen:	The immunogen is a synthetic peptide directed towards the N terminal region of human ITPKB
Specificity:	<b>Expected reactivity:</b> Human
Formulation:	Liquid. Purified antibody supplied in 1x PBS buffer with 0.09% (w/v) sodium azide and 2% sucrose. <i>Note that this product is shipped as lyophilized powder to China customers.</i>
Concentration:	lot specific
Purification:	Affinity purified
Conjugation:	Unconjugated
Storage:	For short term use, store at 2-8°C up to 1 week. For long term storage, store at -20°C in small aliquots to prevent freeze-thaw cycles.
Stability:	Shelf life: one year from despatch.
Predicted Protein Size:	70 kDa
Gene Name:	inositol-trisphosphate 3-kinase B
Database Link:	<a href="#">NP_002212.3</a> <a href="#">Entrez Gene 3707 Human</a> <a href="#">P27987-2</a>
Background:	The protein encoded by this protein regulates inositol phosphate metabolism by phosphorylation of second messenger inositol 1,4,5-trisphosphate to Ins(1,3,4,5)P4. The activity of this encoded protein is responsible for regulating the levels of a large number of inositol polyphosphates that are important in cellular signaling. Both calcium/calmodulin and protein phosphorylation mechanisms control its activity.
Synonyms:	IP3K; IP3K-B; IP3KB; OTTHUMP00000035705; PIG37

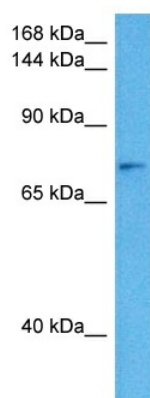


[View online »](#)

Protein Families: Druggable Genome

Protein Pathways: Calcium signaling pathway, Inositol phosphate metabolism, Metabolic pathways, Phosphatidylinositol signaling system

### Product images:



Host: Rabbit  
Target Name: ITPKB  
Sample Type: Mesenchymoma Tumor Lysate  
Antibody Dilution: 1.0 $\mu$ g/ml

Host: Rabbit  
Target Name: ITPKB  
Sample Tissue: Human Mesenchymoma Tumor lysates  
Antibody Dilution: 1 $\mu$ g/ml