

Product datasheet for **TA361517**

CLECSF6 (CLEC4A) Rabbit Polyclonal Antibody

Product data:

Product Type:	Primary Antibodies
Applications:	WB
Reactivity:	Human
Host:	Rabbit
Clonality:	Polyclonal
Immunogen:	The immunogen is a synthetic peptide directed towards the middle region of human CLEC4A
Specificity:	Expected reactivity: Human
Formulation:	Liquid. Purified antibody supplied in 1x PBS buffer with 0.09% (w/v) sodium azide and 2% sucrose. <i>Note that this product is shipped as lyophilized powder to China customers.</i>
Concentration:	lot specific
Purification:	Affinity purified
Conjugation:	Unconjugated
Storage:	For short term use, store at 2-8°C up to 1 week. For long term storage, store at -20°C in small aliquots to prevent freeze-thaw cycles.
Stability:	Shelf life: one year from despatch.
Predicted Protein Size:	22 kDa
Gene Name:	C-type lectin domain family 4 member A
Database Link:	NP_057268.1 Entrez Gene 50856 Human Q9UMR7-2
Background:	This gene encodes a member of the C-type lectin/C-type lectin-like domain (CTL/CTLD) superfamily. Members of this family share a common protein fold and have diverse functions, such as cell adhesion, cell-cell signalling, glycoprotein turnover, and roles in inflammation and immune response. The encoded type 2 transmembrane protein may play a role in inflammatory and immune response. Multiple transcript variants encoding distinct isoforms have been identified for this gene. This gene is closely linked to other CTL/CTLD superfamily members on chromosome 12p13 in the natural killer gene complex region.

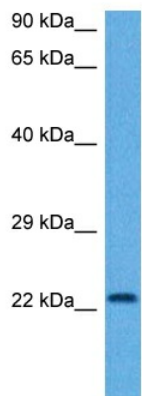


[View online »](#)

Synonyms: CLECSF6; DCIR; DDB27; HDCGC13P; LLIR

Protein Families: Druggable Genome, Transmembrane

Product images:



Host: Rabbit
Target Name: CLEC4A
Sample Type: Neurofibroma Tumor Lysate
Antibody Dilution: 1.0 μ g/ml

Host: Rabbit
Target Name: CLEC4A
Sample Tissue: Human Neurofibroma Tumor lysates
Antibody Dilution: 1 μ g/ml