

Product datasheet for **TA361515**

MYBPC1 Rabbit Polyclonal Antibody

Product data:

Product Type:	Primary Antibodies
Applications:	WB
Reactivity:	Human
Host:	Rabbit
Clonality:	Polyclonal
Immunogen:	The immunogen is a synthetic peptide directed towards the N terminal region of human MYBPC1
Specificity:	Expected reactivity: Human
Formulation:	Liquid. Purified antibody supplied in 1x PBS buffer with 0.09% (w/v) sodium azide and 2% sucrose. <i>Note that this product is shipped as lyophilized powder to China customers.</i>
Concentration:	lot specific
Purification:	Affinity purified
Conjugation:	Unconjugated
Storage:	For short term use, store at 2-8°C up to 1 week. For long term storage, store at -20°C in small aliquots to prevent freeze-thaw cycles.
Stability:	Shelf life: one year from despatch.
Predicted Protein Size:	125 kDa
Gene Name:	myosin binding protein C, slow type
Database Link:	NP_001241647.1 Entrez Gene 4604 Human Q00872



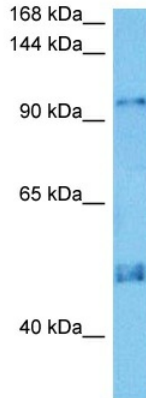
[View online »](#)

Background:

This gene encodes a member of the myosin-binding protein C family. Myosin-binding protein C family members are myosin-associated proteins found in the cross-bridge-bearing zone (C region) of A bands in striated muscle. The encoded protein is the slow skeletal muscle isoform of myosin-binding protein C and plays an important role in muscle contraction by recruiting muscle-type creatine kinase to myosin filaments. Mutations in this gene are associated with distal arthrogyrosis type I. Alternatively spliced transcript variants encoding multiple isoforms have been observed for this gene.

Synonyms:

MYBPCC; MYBPCS; slow-type

Product images:

Host: Rabbit
Target Name: MYBPC1
Sample Type: HCT116 Cell Lysate
Antibody Dilution: 1.0µg/ml

Host: Rabbit
Target Name: MYBPC1
Sample Tissue: Human HCT116 Whole Cell lysates
Antibody Dilution: 1 µg/ml