

Product datasheet for **TA361510**

SUCLG1 Rabbit Polyclonal Antibody

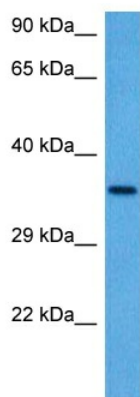
Product data:

| | |
|-------------------------|---|
| Product Type: | Primary Antibodies |
| Applications: | WB |
| Reactivity: | Human |
| Host: | Rabbit |
| Clonality: | Polyclonal |
| Immunogen: | The immunogen is a synthetic peptide directed towards the middle region of human SUCLG1 |
| Specificity: | Expected reactivity: Human |
| Formulation: | Liquid. Purified antibody supplied in 1x PBS buffer with 0.09% (w/v) sodium azide and 2% sucrose. <i>Note that this product is shipped as lyophilized powder to China customers.</i> |
| Concentration: | lot specific |
| Purification: | Affinity purified |
| Conjugation: | Unconjugated |
| Storage: | For short term use, store at 2-8°C up to 1 week. For long term storage, store at -20°C in small aliquots to prevent freeze-thaw cycles. |
| Stability: | Shelf life: one year from despatch. |
| Predicted Protein Size: | 36 kDa |
| Gene Name: | succinate-CoA ligase alpha subunit |
| Database Link: | NP_003840.2 Entrez Gene 8802 Human P53597 |
| Background: | This gene encodes the alpha subunit of the heterodimeric enzyme succinate coenzyme A ligase. This enzyme is targeted to the mitochondria and catalyzes the conversion of succinyl CoA and ADP or GDP to succinate and ATP or GTP. Mutations in this gene are the cause of the metabolic disorder fatal infantile lactic acidosis and mitochondrial DNA depletion. |
| Synonyms: | FLJ21114; G-ALPHA; SCS-alpha; SUCLA1; tmp_locus_1 |
| Protein Pathways: | Citrate cycle (TCA cycle), Metabolic pathways, Propanoate metabolism |



[View online »](#)

Product images:



Host: Rabbit
Target Name: SUCLG1
Sample Type: HCT116 Cell Lysate
Antibody Dilution: 1.0 μ g/ml

Host: Rabbit
Target Name: SUCLG1
Sample Tissue: Human HCT116 Whole Cell lysates
Antibody Dilution: 1 μ g/ml