

## Product datasheet for **TA361505**

### RPP30 Rabbit Polyclonal Antibody

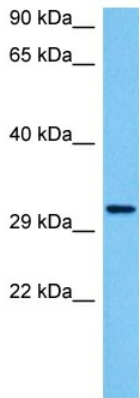
#### Product data:

Product Type:	Primary Antibodies
Applications:	WB
Reactivity:	Human
Host:	Rabbit
Clonality:	Polyclonal
Immunogen:	The immunogen is a synthetic peptide directed towards the middle region of human RPP30
Specificity:	<b>Expected reactivity:</b> Human
Formulation:	Liquid. Purified antibody supplied in 1x PBS buffer with 0.09% (w/v) sodium azide and 2% sucrose.
Concentration:	lot specific
Purification:	Affinity purified
Conjugation:	Unconjugated
Storage:	For short term use, store at 2-8°C up to 1 week. For long term storage, store at -20°C in small aliquots to prevent freeze-thaw cycles.
Stability:	Shelf life: one year from despatch.
Predicted Protein Size:	29 kDa
Gene Name:	ribonuclease P/MRP subunit p30
Database Link:	<a href="#">NP_001098016.1</a> <a href="#">Entrez Gene 10556 Human P78346</a>
Background:	Component of ribonuclease P, a protein complex that generates mature tRNA molecules by cleaving their 5'-ends.
Synonyms:	FLJ38491; RNASEP2; TSG15



[View online »](#)

Product images:



Host: Rabbit  
Target Name: RPP30  
Sample Type: Jurkat Cell Lysate  
Antibody Dilution: 1.0µg/ml

Host: Rabbit  
Target Name: RPP30  
Sample Tissue: Human Jurkat Whole Cell lysates  
Antibody Dilution: 1ug/ml