

Product datasheet for **TA361499**

EDG4 (LPAR2) Rabbit Polyclonal Antibody

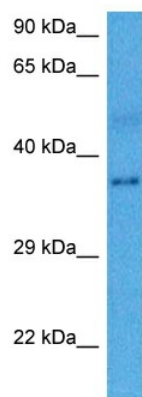
Product data:

Product Type:	Primary Antibodies
Applications:	WB
Reactivity:	Human
Host:	Rabbit
Clonality:	Polyclonal
Immunogen:	The immunogen is a synthetic peptide directed towards the N terminal region of human LPAR2
Specificity:	Expected reactivity: Human
Formulation:	Liquid. Purified antibody supplied in 1x PBS buffer with 0.09% (w/v) sodium azide and 2% sucrose. <i>Note that this product is shipped as lyophilized powder to China customers.</i>
Concentration:	lot specific
Purification:	Affinity purified
Conjugation:	Unconjugated
Storage:	For short term use, store at 2-8°C up to 1 week. For long term storage, store at -20°C in small aliquots to prevent freeze-thaw cycles.
Stability:	Shelf life: one year from despatch.
Predicted Protein Size:	38 kDa
Gene Name:	lysophosphatidic acid receptor 2
Database Link:	NP_004711.2 Entrez Gene 9170 Human Q9HBW0
Background:	This gene encodes a member of family I of the G protein-coupled receptors, as well as the EDG family of proteins. This protein functions as a lysophosphatidic acid (LPA) receptor and contributes to Ca ²⁺ mobilization, a critical cellular response to LPA in cells, through association with Gi and Gq proteins. An alternative splice variant has been described but its full length sequence has not been determined.
Synonyms:	EDG-4; EDG4; FLJ93869; LPA-2; LPA2



[View online »](#)

Product images:



Host: Rabbit
Target Name: LPAR2
Sample Type: Mesenchymoma Tumor Lysate
Antibody Dilution: 1.0 μ g/ml

Host: Rabbit
Target Name: LPAR2
Sample Tissue: Human Mesenchymoma Tumor lysates
Antibody Dilution: 1 ug/ml