

Product datasheet for **TA361493**

EMILIN1 Rabbit Polyclonal Antibody

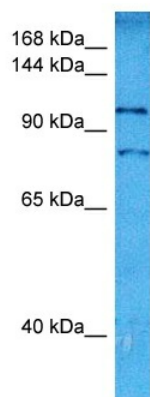
Product data:

Product Type:	Primary Antibodies
Applications:	WB
Reactivity:	Human
Host:	Rabbit
Clonality:	Polyclonal
Immunogen:	The immunogen is a synthetic peptide directed towards the middle region of human EMILIN1
Specificity:	Expected reactivity: Human
Formulation:	Liquid. Purified antibody supplied in 1x PBS buffer with 0.09% (w/v) sodium azide and 2% sucrose. <i>Note that this product is shipped as lyophilized powder to China customers.</i>
Concentration:	lot specific
Purification:	Affinity purified
Conjugation:	Unconjugated
Storage:	For short term use, store at 2-8°C up to 1 week. For long term storage, store at -20°C in small aliquots to prevent freeze-thaw cycles.
Stability:	Shelf life: one year from despatch.
Predicted Protein Size:	111 kDa
Gene Name:	elastin microfibril interfacier 1
Database Link:	NP_008977.1 Entrez Gene 11117 Human Q9Y6C2
Background:	This gene encodes an extracellular matrix glycoprotein that is characterized by an N-terminal microfibril interface domain, a coiled-coiled alpha-helical domain, a collagenous domain and a C-terminal globular C1q domain. The encoded protein associates with elastic fibers at the interface between elastin and microfibrils and may play a role in the development of elastic tissues including large blood vessels, dermis, heart and lung.
Synonyms:	DKFZp586M121; EMI; EMILIN; gp115



[View online »](#)

Product images:



Host: Rabbit
Target Name: EMILIN1
Sample Type: Mesenchymoma Tumor Lysate
Antibody Dilution: 1.0 μ g/ml

Host: Rabbit
Target Name: EMILIN1
Sample Tissue: Human Mesenchymoma Tumor lysates
Antibody Dilution: 1 ug/ml