

## Product datasheet for **TA361489**

### Annexin A10 (ANXA10) Rabbit Polyclonal Antibody

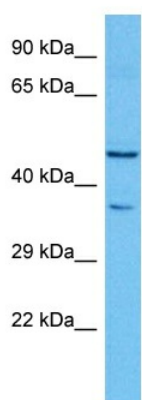
#### Product data:

|                         |  |
|-------------------------|--|
| Product Type:           | Primary Antibodies   |
| Applications:           | WB   |
| Reactivity:             | Human  |
| Host:                   | Rabbit   |
| Clonality:              | Polyclonal   |
| Immunogen:              | The immunogen is a synthetic peptide directed towards the C terminal region of Human ANXA10  |
| Specificity:            | <b>Expected reactivity:</b> Human  |
| Formulation:            | Liquid. Purified antibody supplied in 1x PBS buffer with 0.09% (w/v) sodium azide and 2% sucrose.<br><i>Note that this product is shipped as lyophilized powder to China customers.</i>  |
| Concentration:          | lot specific   |
| Purification:           | Affinity purified  |
| Conjugation:            | Unconjugated   |
| Storage:                | For short term use, store at 2-8°C up to 1 week. For long term storage, store at -20°C in small aliquots to prevent freeze-thaw cycles.  |
| Stability:              | Shelf life: one year from despatch.  |
| Predicted Protein Size: | 35 kDa   |
| Gene Name:              | annexin A10  |
| Database Link:          | <a href="#">NP_009124.2</a><br><a href="#">Entrez Gene 11199 Human</a><br><a href="#">Q9UJ72</a>   |
| Background:             | This gene encodes a member of the annexin family. Members of this calcium-dependent phospholipid-binding protein family play a role in the regulation of cellular growth and in signal transduction pathways. The function of this gene has not yet been determined. |
| Synonyms:               | Annexin-10; Annexin-14; ANX14  |



[View online »](#)

## Product images:



Host: Rabbit  
Target Name: ANXA10  
Sample Type: ACHN Cell Lysate  
Antibody Dilution: 1.0 $\mu$ g/ml

Host: Rabbit  
Target Name: ANXA10  
Sample Tissue: Human ACHN Whole Cell lysates  
Antibody Dilution: 1  $\mu$ g/ml