

Product datasheet for **TA361484**

PDGFC Rabbit Polyclonal Antibody

Product data:

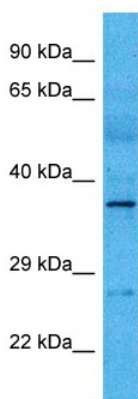
Product Type:	Primary Antibodies
Applications:	WB
Reactivity:	Human
Host:	Rabbit
Clonality:	Polyclonal
Immunogen:	The immunogen is a synthetic peptide directed towards the N terminal region of human PDGFC
Specificity:	Expected reactivity: Human
Formulation:	Liquid. Purified antibody supplied in 1x PBS buffer with 0.09% (w/v) sodium azide and 2% sucrose. <i>Note that this product is shipped as lyophilized powder to China customers.</i>
Concentration:	lot specific
Purification:	Affinity purified
Conjugation:	Unconjugated
Storage:	For short term use, store at 2-8°C up to 1 week. For long term storage, store at -20°C in small aliquots to prevent freeze-thaw cycles.
Stability:	Shelf life: one year from despatch.
Predicted Protein Size:	37 kDa
Gene Name:	platelet derived growth factor C
Database Link:	NP_057289.1 Entrez Gene 56034 Human Q9NRA1
Background:	The protein encoded by this gene is a member of the platelet-derived growth factor family. The four members of this family are mitogenic factors for cells of mesenchymal origin and are characterized by a core motif of eight cysteines. This gene product appears to form only homodimers. It differs from the platelet-derived growth factor alpha and beta polypeptides in having an unusual N-terminal domain, the CUB domain. Alternatively spliced transcript variants have been found for this gene.



[View online »](#)

Synonyms:	Fallotein; PDGF-C; SCDGF; VEGF-E
Protein Families:	Adult stem cells, Druggable Genome, Embryonic stem cells, ES Cell Differentiation/IPS, Induced pluripotent stem cells
Protein Pathways:	Cytokine-cytokine receptor interaction, Focal adhesion, Gap junction, Melanoma, Prostate cancer, Regulation of actin cytoskeleton

Product images:



Host: Rabbit
Target Name: PDGFC
Sample Type: Lung Tumor Lysate
Antibody Dilution: 1.0 μ g/ml

Host: Rabbit
Target Name: PDGFC
Sample Tissue: Human Lung Tumor lysates
Antibody Dilution: 1 μ g/ml