

Product datasheet for **TA361478**

SMC4 Rabbit Polyclonal Antibody

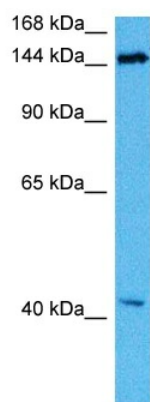
Product data:

Product Type:	Primary Antibodies
Applications:	WB
Reactivity:	Human
Host:	Rabbit
Clonality:	Polyclonal
Immunogen:	The immunogen is a synthetic peptide directed towards the N terminal region of human SMC4
Specificity:	Expected reactivity: Human
Formulation:	Liquid. Purified antibody supplied in 1x PBS buffer with 0.09% (w/v) sodium azide and 2% sucrose. <i>Note that this product is shipped as lyophilized powder to China customers.</i>
Concentration:	lot specific
Purification:	Affinity purified
Conjugation:	Unconjugated
Storage:	For short term use, store at 2-8°C up to 1 week. For long term storage, store at -20°C in small aliquots to prevent freeze-thaw cycles.
Stability:	Shelf life: one year from despatch.
Predicted Protein Size:	147 kDa
Gene Name:	structural maintenance of chromosomes 4
Database Link:	NP_001002800.1 Entrez Gene 10051 Human Q9NTJ3
Background:	Members of the structural maintenance of chromosomes, or SMC, family are critical for mitotic chromosome condensation in frogs and for DNA repair in mammals.
Synonyms:	CAP-C; CAPC; hCAP-C; SMC4L1



[View online »](#)

Product images:



Host: Rabbit
Target Name: SMC4
Sample Type: 293T Cell Lysate
Antibody Dilution: 1.0 μ g/ml

Host: Rabbit
Target Name: SMC4
Sample Tissue: Human 293T Whole Cell lysates
Antibody Dilution: 1 μ g/ml