

Product datasheet for **TA361475**

RDH8 Rabbit Polyclonal Antibody

Product data:

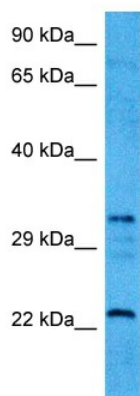
Product Type:	Primary Antibodies
Applications:	WB
Reactivity:	Human
Host:	Rabbit
Clonality:	Polyclonal
Immunogen:	The immunogen is a synthetic peptide directed towards the middle region of human RDH8
Specificity:	Expected reactivity: Human
Formulation:	Liquid. Purified antibody supplied in 1x PBS buffer with 0.09% (w/v) sodium azide and 2% sucrose. <i>Note that this product is shipped as lyophilized powder to China customers.</i>
Concentration:	lot specific
Purification:	Affinity purified
Conjugation:	Unconjugated
Storage:	For short term use, store at 2-8°C up to 1 week. For long term storage, store at -20°C in small aliquots to prevent freeze-thaw cycles.
Stability:	Shelf life: one year from despatch.
Predicted Protein Size:	34 kDa
Gene Name:	retinol dehydrogenase 8 (all-trans)
Database Link:	NP_056540.2 Entrez Gene 50700 Human Q9NYR8
Background:	This gene encodes a member of the short-chain dehydrogenase/reductase family. The encoded protein catalyzes the reduction of all-trans-retinal to all-trans-retinol, the first reaction step of the rhodopsin regeneration pathway. This enzymatic reaction is the rate-limiting step in the visual cycle.
Synonyms:	PRRDH; SDR28C2
Protein Families:	Druggable Genome



[View online »](#)

Protein Pathways: Metabolic pathways, Retinol metabolism

Product images:



Host: Rabbit
Target Name: RDH8
Sample Type: HCT116 Cell Lysate
Antibody Dilution: 1.0 μ g/ml

Host: Rabbit
Target Name: RDH8
Sample Tissue: Human HCT116 Whole Cell
lysates
Antibody Dilution: 1 μ g/ml