

Product datasheet for **TA361474**

KCTD12 Rabbit Polyclonal Antibody

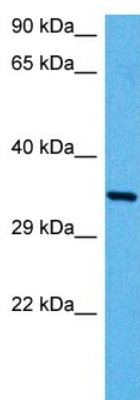
Product data:

Product Type:	Primary Antibodies
Applications:	WB
Reactivity:	Human
Host:	Rabbit
Clonality:	Polyclonal
Immunogen:	The immunogen is a synthetic peptide directed towards the middle region of human KCTD12
Specificity:	Expected reactivity: Human
Formulation:	Liquid. Purified antibody supplied in 1x PBS buffer with 0.09% (w/v) sodium azide and 2% sucrose. <i>Note that this product is shipped as lyophilized powder to China customers.</i>
Concentration:	lot specific
Purification:	Affinity purified
Conjugation:	Unconjugated
Storage:	For short term use, store at 2-8°C up to 1 week. For long term storage, store at -20°C in small aliquots to prevent freeze-thaw cycles.
Stability:	Shelf life: one year from despatch.
Predicted Protein Size:	35 kDa
Gene Name:	potassium channel tetramerization domain containing 12
Database Link:	NP_612453.1 Entrez Gene 115207 Human Q96CX2
Background:	Auxiliary subunit of GABA-B receptors that determine the pharmacology and kinetics of the receptor response. Increases agonist potency and markedly alter the G-protein signaling of the receptors by accelerating onset and promoting desensitization.
Synonyms:	C13orf2; FLJ33073; KIAA1778; OTTHUMP00000018517; PFET1; PFETIN
Protein Families:	Ion Channels: Other



[View online »](#)

Product images:



Host: Rabbit
Target Name: KCTD12
Sample Type: HepG2 Cell Lysate
Antibody Dilution: 1.0 μ g/ml

Host: Rabbit
Target Name: KCTD12
Sample Tissue: Human HepG2 Whole Cell lysates
Antibody Dilution: 1 μ g/ml