

Product datasheet for **TA361471**

SEC22L1 (SEC22B) Rabbit Polyclonal Antibody

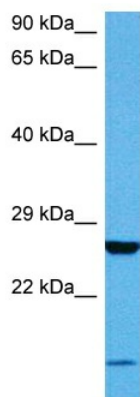
Product data:

Product Type:	Primary Antibodies
Applications:	WB
Reactivity:	Human
Host:	Rabbit
Clonality:	Polyclonal
Immunogen:	The immunogen is a synthetic peptide directed towards the N terminal region of human SEC22B
Specificity:	Expected reactivity: Human
Formulation:	Liquid. Purified antibody supplied in 1x PBS buffer with 0.09% (w/v) sodium azide and 2% sucrose. <i>Note that this product is shipped as lyophilized powder to China customers.</i>
Concentration:	lot specific
Purification:	Affinity purified
Conjugation:	Unconjugated
Storage:	For short term use, store at 2-8°C up to 1 week. For long term storage, store at -20°C in small aliquots to prevent freeze-thaw cycles.
Stability:	Shelf life: one year from despatch.
Predicted Protein Size:	25 kDa
Gene Name:	SEC22 homolog B, vesicle trafficking protein (gene/pseudogene)
Database Link:	NP_004883.3 Entrez Gene 9554 Human O75396
Background:	The protein encoded by this gene is a member of the SEC22 family of vesicle trafficking proteins. It seems to complex with SNARE and it is thought to play a role in the ER-Golgi protein trafficking. This protein has strong similarity to Mus musculus and Cricetulus griseus proteins.
Synonyms:	ERS-24; ERS24; OTTHUMP00000205451; SEC22L1
Protein Pathways:	SNARE interactions in vesicular transport



[View online »](#)

Product images:



Host: Rabbit
Target Name: SEC22B
Sample Type: DLD1 Cell Lysate
Antibody Dilution: 1.0 μ g/ml

Host: Rabbit
Target Name: SEC22B
Sample Tissue: Human DLD1 Whole Cell lysates
Antibody Dilution: 1 μ g/ml