

Product datasheet for **TA361468**

PLEKHA1 Rabbit Polyclonal Antibody

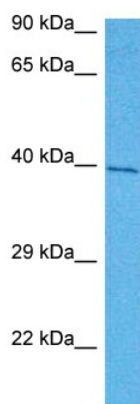
Product data:

Product Type:	Primary Antibodies
Applications:	WB
Reactivity:	Human
Host:	Rabbit
Clonality:	Polyclonal
Immunogen:	The immunogen is a synthetic peptide directed towards the middle region of human PLEKHA1
Specificity:	Expected reactivity: Human
Formulation:	Liquid. Purified antibody supplied in 1x PBS buffer with 0.09% (w/v) sodium azide and 2% sucrose.
Concentration:	lot specific
Purification:	Affinity purified
Conjugation:	Unconjugated
Storage:	For short term use, store at 2-8°C up to 1 week. For long term storage, store at -20°C in small aliquots to prevent freeze-thaw cycles.
Stability:	Shelf life: one year from despatch.
Predicted Protein Size:	38 kDa
Gene Name:	pleckstrin homology domain containing A1
Database Link:	NP_001001974.1 Entrez Gene 59338 Human Q9HB21-2
Background:	This gene encodes a pleckstrin homology domain-containing adapter protein. The encoded protein is localized to the plasma membrane where it specifically binds phosphatidylinositol 3,4-bisphosphate. This protein may be involved in the formation of signaling complexes in the plasma membrane. Polymorphisms in this gene are associated with age-related macular degeneration. Alternate splicing results in multiple transcript variants. A pseudogene of this gene is found on chromosome 5.
Synonyms:	OTTHUMP00000206097; TAPP-1; TAPP1



[View online »](#)

Product images:



Host: Rabbit
Target Name: PLEKHA1
Sample Type: HCT116 Cell Lysate
Antibody Dilution: 1.0 μ g/ml

Host: Rabbit
Target Name: PLEKHA1
Sample Tissue: Human HCT116 Whole Cell lysates
Antibody Dilution: 1 μ g/ml