

## Product datasheet for **TA361463**

### ACTG2 Rabbit Polyclonal Antibody

#### Product data:

Product Type:	Primary Antibodies
Applications:	WB
Reactivity:	Human
Host:	Rabbit
Clonality:	Polyclonal
Immunogen:	The immunogen is a synthetic peptide directed towards the C terminal region of human ACTG2
Specificity:	<b>Expected reactivity:</b> Human
Formulation:	Liquid. Purified antibody supplied in 1x PBS buffer with 0.09% (w/v) sodium azide and 2% sucrose. <i>Note that this product is shipped as lyophilized powder to China customers.</i>
Concentration:	lot specific
Purification:	Affinity purified
Conjugation:	Unconjugated
Storage:	For short term use, store at 2-8°C up to 1 week. For long term storage, store at -20°C in small aliquots to prevent freeze-thaw cycles.
Stability:	Shelf life: one year from despatch.
Predicted Protein Size:	41 kDa
Gene Name:	actin, gamma 2, smooth muscle, enteric
Database Link:	<a href="#">NP_001186822.1</a> <a href="#">Entrez Gene 72 Human</a> <a href="#">P63267</a>



[View online »](#)

**Background:**

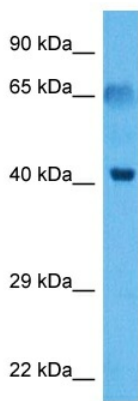
Actins are highly conserved proteins that are involved in various types of cell motility and in the maintenance of the cytoskeleton. Three types of actins, alpha, beta and gamma, have been identified in vertebrates. Alpha actins are found in muscle tissues and are a major constituent of the contractile apparatus. The beta and gamma actins co-exist in most cell types as components of the cytoskeleton and as mediators of internal cell motility. This gene encodes actin gamma 2; a smooth muscle actin found in enteric tissues. Alternative splicing results in multiple transcript variants encoding distinct isoforms. Based on similarity to peptide cleavage of related actins, the mature protein of this gene is formed by removal of two N-terminal peptides.

**Synonyms:**

ACT; ACTA3; ACTE; ACTL3; ACTSG; Alpha-actin-3; Gamma-2-actin; OTTHUMP00000202509

**Protein Pathways:**

Vascular smooth muscle contraction

**Product images:**

Host: Rabbit  
Target Name: ACTG2  
Sample Type: Esophagus Tumor Lysate  
Antibody Dilution: 1.0 $\mu$ g/ml

Host: Rabbit  
Target Name: ACTG2  
Sample Tissue: Human Esophagus Tumor lysates  
Antibody Dilution: 1  $\mu$ g/ml