

Product datasheet for **TA361458**

NPTX2 Rabbit Polyclonal Antibody

Product data:

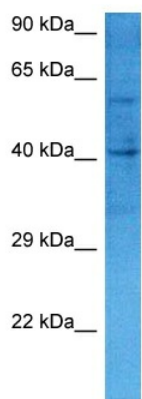
Product Type:	Primary Antibodies
Applications:	WB
Reactivity:	Human
Host:	Rabbit
Clonality:	Polyclonal
Immunogen:	The immunogen is a synthetic peptide directed towards the middle region of human NPTX2
Specificity:	Expected reactivity: Human
Formulation:	Liquid. Purified antibody supplied in 1x PBS buffer with 0.09% (w/v) sodium azide and 2% sucrose. <i>Note that this product is shipped as lyophilized powder to China customers.</i>
Concentration:	lot specific
Purification:	Affinity purified
Conjugation:	Unconjugated
Storage:	For short term use, store at 2-8°C up to 1 week. For long term storage, store at -20°C in small aliquots to prevent freeze-thaw cycles.
Stability:	Shelf life: one year from despatch.
Predicted Protein Size:	47 kDa
Gene Name:	neuronal pentraxin 2
Database Link:	NP_002514.1 Entrez Gene 4885 Human P47972
Background:	This gene encodes a member of the family of neuronal pentraxins, synaptic proteins that are related to C-reactive protein. This protein is involved in excitatory synapse formation. It also plays a role in clustering of alpha-amino-3-hydroxy-5-methyl-4-isoxazolepropionic acid (AMPA)-type glutamate receptors at established synapses, resulting in non-apoptotic cell death of dopaminergic nerve cells. Up-regulation of this gene in Parkinson disease (PD) tissues suggests that the protein may be involved in the pathology of PD.
Synonyms:	apexin; NARP; NP-II; NP2



[View online »](#)

Protein Families: Secreted Protein

Product images:



Host: Rabbit
Target Name: NPTX2
Sample Type: A172 Cell Lysate
Antibody Dilution: 1.0 μ g/ml

Host: Rabbit
Target Name: NPTX2
Sample Tissue: Human A172 Whole Cell lysates
Antibody Dilution: 1 μ g/ml