

## Product datasheet for **TA361454**

### VPS26 (VPS26A) Rabbit Polyclonal Antibody

#### Product data:

Product Type:	Primary Antibodies
Applications:	IP, WB
Reactivity:	Human
Host:	Rabbit
Clonality:	Polyclonal
Immunogen:	The immunogen is a synthetic peptide directed towards the C terminal region of human VPS26A
Specificity:	<b>Expected reactivity:</b> Human
Formulation:	Liquid. Purified antibody supplied in 1x PBS buffer with 0.09% (w/v) sodium azide and 2% sucrose. <i>Note that this product is shipped as lyophilized powder to China customers.</i>
Concentration:	lot specific
Purification:	Affinity purified
Conjugation:	Unconjugated
Storage:	For short term use, store at 2-8°C up to 1 week. For long term storage, store at -20°C in small aliquots to prevent freeze-thaw cycles.
Stability:	Shelf life: one year from despatch.
Predicted Protein Size:	38 kDa
Gene Name:	VPS26 retromer complex component A
Database Link:	<a href="#">NP_001030337.1</a> <a href="#">Entrez Gene 9559 Human</a> <a href="#">O75436</a>



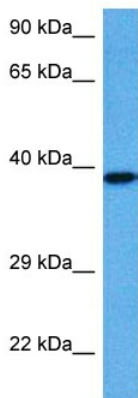
[View online »](#)

**Background:**

This gene belongs to a group of vacuolar protein sorting (VPS) genes. The encoded protein is a component of a large multimeric complex, termed the retromer complex, involved in retrograde transport of proteins from endosomes to the trans-Golgi network. The close structural similarity between the yeast and human proteins that make up this complex suggests a similarity in function. Expression studies in yeast and mammalian cells indicate that this protein interacts directly with VPS35, which serves as the core of the retromer complex. Alternative splicing results in multiple transcript variants encoding different isoforms.

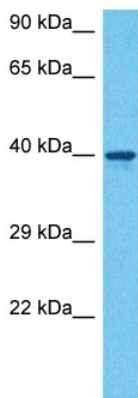
**Synonyms:**

FLJ12930; HB58; Hbeta58; hVPS26; OTTHUMP00000019721; PEP8A; VPS26

**Product images:**


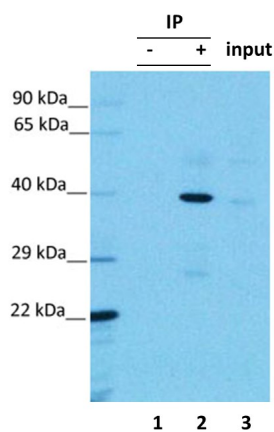
Host: Rabbit  
 Target Name: VPS26A  
 Sample Type: Neurofibroma Tumor Lysate  
 Antibody Dilution: 1.0µg/ml

Host: Rabbit  
 Target Name: VPS26A  
 Sample Tissue: Human Neurofibroma Tumor lysates  
 Antibody Dilution: 1ug/ml



Host: Rabbit  
 Target Name: VPS26A  
 Sample Type: A549 Cell Lysate  
 Antibody Dilution: 1.0µg/ml

Host: Rabbit  
 Target Name: VPS26A  
 Sample Tissue: Human A549 Whole Cell  
 Antibody Dilution: 1ug/ml



Lysate: HEK293 2mg

IP: VPS26A 2ug

Detection: VPS26A 3ug/ml

VPS26A was immunoprecipitated from 2 mg HEK293 Whole Cell Lysate with TA361454 with 1:200 dilution. Western blot was performed using TA361454 at 1/1000 dilution.

Lane 1: Control IP in HEK293 Whole Cell Lysate.

Lane 2: VPS26A IP with TA361454 in HEK293 Whole Cell Lysate.

Lane 3: Input of HEK293 Whole Cell Lysate.