

## Product datasheet for **TA361448**

### EHD3 Rabbit Polyclonal Antibody

#### Product data:

Product Type:	Primary Antibodies
Applications:	WB
Reactivity:	Human
Host:	Rabbit
Clonality:	Polyclonal
Immunogen:	The immunogen is a synthetic peptide directed towards the N terminal region of human EHD3
Specificity:	<b>Expected reactivity:</b> Human
Formulation:	Liquid. Purified antibody supplied in 1x PBS buffer with 0.09% (w/v) sodium azide and 2% sucrose. <i>Note that this product is shipped as lyophilized powder to China customers.</i>
Concentration:	lot specific
Purification:	Affinity purified
Conjugation:	Unconjugated
Storage:	For short term use, store at 2-8°C up to 1 week. For long term storage, store at -20°C in small aliquots to prevent freeze-thaw cycles.
Stability:	Shelf life: one year from despatch.
Predicted Protein Size:	58 kDa
Gene Name:	EH domain containing 3
Database Link:	<a href="#">NP_055415.1</a> <a href="#">Entrez Gene 30845 Human</a> <a href="#">Q9NZN3</a>



[View online »](#)

**Background:**

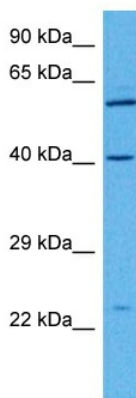
ATP- and membrane-binding protein that controls membrane reorganization/tubulation upon ATP hydrolysis. In vitro causes tubulation of endocytic membranes. Binding to phosphatidic acid induces its membrane tubulation activity. Plays a role in endocytic transport. Involved in early endosome to recycling endosome compartment (ERC), retrograde early endosome to Golgi, and endosome to plasma membrane (rapid recycling) protein transport. Involved in the regulation of Golgi maintenance and morphology. Involved in the recycling of internalized D1 dopamine receptor. Plays a role in cardiac protein trafficking probably implicating ANK. Involved in the ventricular membrane targeting of SLC8A1 and CACNA1C and probably the atrial membrane localization of CACNA1GG and CACNA1H implicated in the regulation of atrial myocyte excitability and cardiac conduction. In conjunction with EHD4 may be involved in endocytic trafficking of KDR/VEGFR2 implicated in control of glomerular function. Involved in the rapid recycling of integrin beta-3 implicated in cell adhesion maintenance. Involved in the unidirectional retrograde dendritic transport of endocytosed BACE1 and in efficient sorting of BACE1 to axons implicating a function in neuronal APP processing. Plays a role in the formation of the ciliary vesicle, an early step in cilium biogenesis; possibly sharing redundant functions with EHD1.

**Synonyms:**

EHD2; PAST3

**Protein Pathways:**

Endocytosis

**Product images:**

Host: Rabbit  
Target Name: EHD3  
Sample Type: Jurkat Cell Lysate  
Antibody Dilution: 1.0µg/ml

Host: Rabbit  
Target Name: EHD3  
Sample Tissue: Human Jurkat Whole Cell lysates  
Antibody Dilution: 1 ug/ml