

Product datasheet for **TA361441**

Kallikrein 11 (KLK11) Rabbit Polyclonal Antibody

Product data:

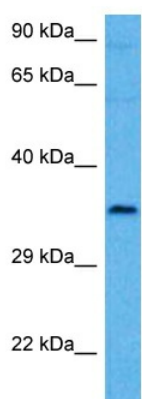
Product Type:	Primary Antibodies
Applications:	WB
Reactivity:	Human
Host:	Rabbit
Clonality:	Polyclonal
Immunogen:	The immunogen is a synthetic peptide directed towards the middle region of human KLK11
Specificity:	Expected reactivity: Human
Formulation:	Liquid. Purified antibody supplied in 1x PBS buffer with 0.09% (w/v) sodium azide and 2% sucrose. <i>Note that this product is shipped as lyophilized powder to China customers.</i>
Concentration:	lot specific
Purification:	Affinity purified
Conjugation:	Unconjugated
Storage:	For short term use, store at 2-8°C up to 1 week. For long term storage, store at -20°C in small aliquots to prevent freeze-thaw cycles.
Stability:	Shelf life: one year from despatch.
Predicted Protein Size:	33 kDa
Gene Name:	kallikrein related peptidase 11
Database Link:	NP_001129504.1 Entrez Gene 11012 Human Q9UBX7-3
Background:	Kallikreins are a subgroup of serine proteases having diverse physiological functions. Growing evidence suggests that many kallikreins are implicated in carcinogenesis and some have potential as novel cancer and other disease biomarkers. This gene is one of the fifteen kallikrein subfamily members located in a cluster on chromosome 19. Alternate splicing of this gene results in multiple transcript variants encoding distinct isoforms which are differentially expressed.
Synonyms:	hippostasin; hK11; MGC33060; PRSS20; TLSP



[View online »](#)

Protein Families: Druggable Genome, Protease, Secreted Protein

Product images:



Host: Rabbit
Target Name: KLK11
Sample Type: Neurofibroma Tumor Lysate
Antibody Dilution: 1.0 μ g/ml

Host: Rabbit
Target Name: KLK11
Sample Tissue: Human Neurofibroma Tumor lysates
Antibody Dilution: 1 μ g/ml