

## Product datasheet for **TA361438**

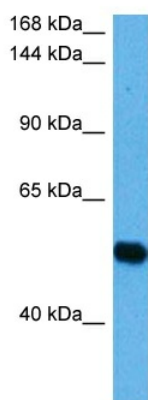
### FAN1 Rabbit Polyclonal Antibody

#### Product data:

Product Type:	Primary Antibodies
Applications:	WB
Reactivity:	Human
Host:	Rabbit
Clonality:	Polyclonal
Immunogen:	The immunogen is a synthetic peptide directed towards the N terminal region of human FAN1
Specificity:	<b>Expected reactivity:</b> Human
Formulation:	Liquid. Purified antibody supplied in 1x PBS buffer with 0.09% (w/v) sodium azide and 2% sucrose.
Concentration:	lot specific
Purification:	Affinity purified
Conjugation:	Unconjugated
Storage:	For short term use, store at 2-8°C up to 1 week. For long term storage, store at -20°C in small aliquots to prevent freeze-thaw cycles.
Stability:	Shelf life: one year from despatch.
Predicted Protein Size:	58 kDa
Gene Name:	FANCD2/FANCI-associated nuclease 1
Database Link:	<a href="#">NP_001139566.1</a> <a href="#">Entrez Gene 22909 Human</a> <a href="#">Q9Y2M0-2</a>
Background:	This gene plays a role in DNA interstrand cross-link repair and encodes a protein with 5' flap endonuclease and 5'-3' exonuclease activity. Mutations in this gene cause karyomegalic interstitial nephritis. Alternatively spliced transcript variants encoding distinct isoforms have been described.
Synonyms:	6030441H18Rik; Mtmr15



[View online »](#)

**Product images:**

Host: Rabbit  
Target Name: FAN1  
Sample Type: Lung Tumor Lysate  
Antibody Dilution: 1.0 $\mu$ g/ml

Host: Rabbit  
Target Name: FAN1  
Sample Tissue: Human Lung Tumor lysates  
Antibody Dilution: 1  $\mu$ g/ml