

Product datasheet for TA361433

GIGYF2 Rabbit Polyclonal Antibody

Product data:

Product Type:	Primary Antibodies
Applications:	WB
Reactivity:	Human
Host:	Rabbit
Clonality:	Polyclonal
Immunogen:	The immunogen is a synthetic peptide directed towards the middle region of human GIGYF2
Specificity:	Expected reactivity: Human
Formulation:	Liquid. Purified antibody supplied in 1x PBS buffer with 0.09% (w/v) sodium azide and 2% sucrose.
Concentration:	lot specific
Purification:	Affinity purified
Conjugation:	Unconjugated
Storage:	For short term use, store at 2-8°C up to 1 week. For long term storage, store at -20°C in small aliquots to prevent freeze-thaw cycles.
Stability:	Shelf life: one year from despatch.
Predicted Protein Size:	142 kDa
Gene Name:	GRB10 interacting GYF protein 2
Database Link:	NP_001096616.1 Entrez Gene 26058 Human Q6Y7W6

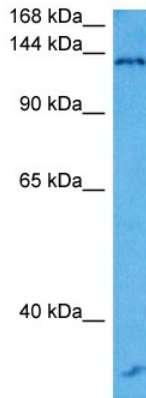


Background:

This gene contains CAG trinucleotide repeats and encodes a protein containing several stretches of polyglutamine residues. The encoded protein may be involved in the regulation of tyrosine kinase receptor signaling. This gene is located in a chromosomal region that was genetically linked to Parkinson disease type II, and mutations in this gene were thought to be causative for this disease. However, more recent studies in different populations have been unable to replicate this association. Alternative splicing results in multiple transcript variants.

Synonyms:

DKFZp686I15154; DKFZp686J17223; FLJ23368; GYF2; KIAA0642; OTTHUMP00000203484; PARK11; PERQ2; PERQ3; TNRC15

Product images:


Host: Rabbit
Target Name: GIGYF2
Sample Type: Jurkat Cell Lysate
Antibody Dilution: 1.0µg/ml

Host: Rabbit
Target Name: GIGYF2
Sample Tissue: Human Jurkat Whole Cell lysates
Antibody Dilution: 1ug/ml