

## Product datasheet for **TA361431**

### **BAP31 (BCAP31) Rabbit Polyclonal Antibody**

#### **Product data:**

Product Type:	Primary Antibodies
Applications:	WB
Reactivity:	Human
Host:	Rabbit
Clonality:	Polyclonal
Immunogen:	The immunogen is a synthetic peptide directed towards the middle region of human BCAP31
Specificity:	<b>Expected reactivity:</b> Human
Formulation:	Liquid. Purified antibody supplied in 1x PBS buffer with 0.09% (w/v) sodium azide and 2% sucrose. <i>Note that this product is shipped as lyophilized powder to China customers.</i>
Concentration:	lot specific
Purification:	Affinity purified
Conjugation:	Unconjugated
Storage:	For short term use, store at 2-8°C up to 1 week. For long term storage, store at -20°C in small aliquots to prevent freeze-thaw cycles.
Stability:	Shelf life: one year from despatch.
Predicted Protein Size:	27 kDa
Gene Name:	B-cell receptor-associated protein 31
Database Link:	<a href="#">NP_001132913.1</a> <a href="#">Entrez Gene 10134 Human</a> <a href="#">P51572</a>
Background:	This gene encodes a member of the B-cell receptor associated protein 31 superfamily. The encoded protein is a multi-pass transmembrane protein of the endoplasmic reticulum that is involved in the anterograde transport of membrane proteins from the endoplasmic reticulum to the Golgi and in caspase 8-mediated apoptosis. Microdeletions in this gene are associated with contiguous ABCD1/DXS1375E deletion syndrome (CADD5), a neonatal disorder. Alternative splicing of this gene results in multiple transcript variants. Two related pseudogenes have been identified on chromosome 16.

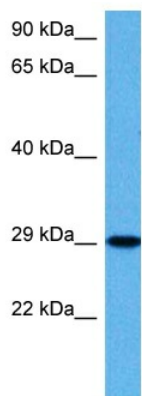


[View online »](#)

**Synonyms:** 6C6-AG; BAP31; CDM; DELXq28; DXS1357E; MICRODELXq28; OTTHUMP00000025978

**Protein Families:** Druggable Genome, Transmembrane

### Product images:



Host: Rabbit  
Target Name: BCAP31  
Sample Type: DLD1 Cell Lysate  
Antibody Dilution: 1.0µg/ml

Host: Rabbit  
Target Name: BCAP31  
Sample Tissue: Human DLD1 Whole Cell lysates  
Antibody Dilution: 1ug/ml