

## Product datasheet for **TA361430**

### IL17B Receptor (IL17RB) Rabbit Polyclonal Antibody

#### Product data:

Product Type:	Primary Antibodies
Applications:	WB
Reactivity:	Human
Host:	Rabbit
Clonality:	Polyclonal
Immunogen:	The immunogen is a synthetic peptide directed towards the middle region of human IL17RB
Specificity:	<b>Expected reactivity:</b> Human
Formulation:	Liquid. Purified antibody supplied in 1x PBS buffer with 0.09% (w/v) sodium azide and 2% sucrose. <i>Note that this product is shipped as lyophilized powder to China customers.</i>
Concentration:	lot specific
Purification:	Affinity purified
Conjugation:	Unconjugated
Storage:	For short term use, store at 2-8°C up to 1 week. For long term storage, store at -20°C in small aliquots to prevent freeze-thaw cycles.
Stability:	Shelf life: one year from despatch.
Predicted Protein Size:	502 kDa
Gene Name:	interleukin 17 receptor B
Database Link:	<a href="#">NP_061195.2</a> <a href="#">Entrez Gene 55540 Human</a> <a href="#">Q9NRM6</a>
Background:	The protein encoded by this gene is a cytokine receptor. This receptor specifically binds to IL17B and IL17E, but does not bind to IL17 and IL17C. This receptor has been shown to mediate the activation of NF-kappaB and the production of IL8 induced by IL17E. The expression of the rat counterpart of this gene was found to be significantly up-regulated during intestinal inflammation, which suggested the immunoregulatory activity of this receptor.
Synonyms:	CRL4; EVI27; IL-17RB; IL-17Rh1; IL17BR; IL17RH1; MGC5245

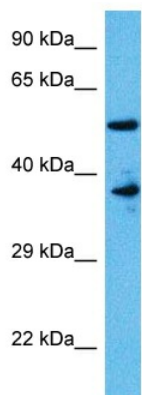


[View online »](#)

Protein Families: Druggable Genome, Secreted Protein, Transmembrane

Protein Pathways: Cytokine-cytokine receptor interaction

### Product images:



Host: Rabbit  
Target Name: IL17RB  
Sample Type: A172 Cell Lysate  
Antibody Dilution: 1.0 $\mu$ g/ml

Host: Rabbit  
Target Name: IL17RB  
Sample Tissue: Human A172 Whole Cell lysates  
Antibody Dilution: 1 $\mu$ g/ml