

## Product datasheet for **TA361427**

### **GALNT2 Rabbit Polyclonal Antibody**

#### **Product data:**

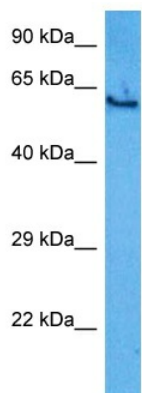
Product Type:	Primary Antibodies
Applications:	WB
Reactivity:	Human
Host:	Rabbit
Clonality:	Polyclonal
Immunogen:	The immunogen is a synthetic peptide directed towards the middle region of human GALNT2
Specificity:	<b>Expected reactivity:</b> Human
Formulation:	Liquid. Purified antibody supplied in 1x PBS buffer with 0.09% (w/v) sodium azide and 2% sucrose. <i>Note that this product is shipped as lyophilized powder to China customers.</i>
Concentration:	lot specific
Purification:	Affinity purified
Conjugation:	Unconjugated
Storage:	For short term use, store at 2-8°C up to 1 week. For long term storage, store at -20°C in small aliquots to prevent freeze-thaw cycles.
Stability:	Shelf life: one year from despatch.
Predicted Protein Size:	62 kDa
Gene Name:	polypeptide N-acetylgalactosaminyltransferase 2
Database Link:	<a href="#">NP_001278795.1</a> <a href="#">Entrez Gene 2590 Human</a> <a href="#">Q10471</a>
Background:	This gene encodes a member of the glycosyltransferase 2 protein family. Members of this family initiate mucin-type O-glycosylation of peptides in the Golgi apparatus. The encoded protein may be involved in O-linked glycosylation of the immunoglobulin A1 hinge region. This gene may influence triglyceride levels, and may be involved Type 2 diabetes, as well as several types of cancer. Alternative splicing results in multiple transcript variants.
Synonyms:	GalNAc-T2
Protein Families:	Secreted Protein, Transmembrane



[View online »](#)

Protein Pathways: Metabolic pathways, O-Glycan biosynthesis

### Product images:



Host: Rabbit  
Target Name: GALNT2  
Sample Type: Neurofibroma Tumor Lysate  
Antibody Dilution: 1.0 $\mu$ g/ml

Host: Rabbit  
Target Name: GALNT2  
Sample Tissue: Human Neurofibroma Tumor lysates  
Antibody Dilution: 1 $\mu$ g/ml