

Product datasheet for **TA361424**

Hsp105 (HSPH1) Rabbit Polyclonal Antibody

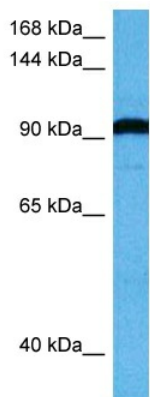
Product data:

Product Type:	Primary Antibodies
Applications:	WB
Reactivity:	Human
Host:	Rabbit
Clonality:	Polyclonal
Immunogen:	The immunogen is a synthetic peptide directed towards the middle region of human HSPH1
Specificity:	Expected reactivity: Human
Formulation:	Liquid. Purified antibody supplied in 1x PBS buffer with 0.09% (w/v) sodium azide and 2% sucrose. <i>Note that this product is shipped as lyophilized powder to China customers.</i>
Concentration:	lot specific
Purification:	Affinity purified
Conjugation:	Unconjugated
Storage:	For short term use, store at 2-8°C up to 1 week. For long term storage, store at -20°C in small aliquots to prevent freeze-thaw cycles.
Stability:	Shelf life: one year from despatch.
Predicted Protein Size:	94 kDa
Gene Name:	heat shock protein family H (Hsp110) member 1
Database Link:	NP_001273432.1 Entrez Gene 10808 Human Q92598
Background:	Prevents the aggregation of denatured proteins in cells under severe stress, on which the ATP levels decrease markedly. Inhibits HSPA8/HSC70 ATPase and chaperone activities.
Synonyms:	DKFZp686M05240; HSP105; HSP105A; HSP105B; HSP110; KIAA0201; NY-CO-25
Protein Families:	Stem cell - Pluripotency



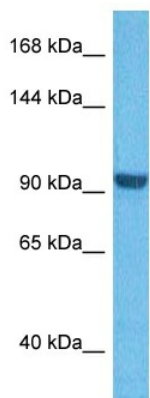
[View online »](#)

Product images:



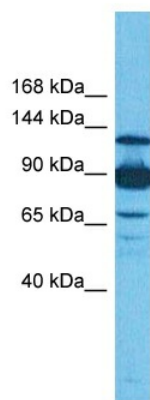
Host: Rabbit
 Target Name: HSPH1
 Sample Type: Neurofibroma Tumor Lysate
 Antibody Dilution: 1.0µg/ml

Host: Rabbit
 Target Name: HSPH1
 Sample Tissue: Human Neurofibroma Tumor lysates
 Antibody Dilution: 1ug/ml



Host: Rabbit
 Target Name: HSPH1
 Sample Type: 786-0 Cell Lysate
 Antibody Dilution: 1.0µg/ml

Host: Rabbit
 Target Name: HSPH1
 Sample Tissue: Human 786-0 Whole Cell
 Antibody Dilution: 0.5ug/ml



Host: Rabbit
Target Name: HSPH1
Sample Type: THP-1 Cell Lysate
Antibody Dilution: 1.0 μ g/ml

Host: Rabbit
Target Name: HSPH1
Sample Tissue: Human THP-1 Whole Cell
Antibody Dilution: 3 μ g/ml