

## Product datasheet for **TA361421**

### CCKAR Rabbit Polyclonal Antibody

#### Product data:

Product Type:	Primary Antibodies
Applications:	WB
Reactivity:	Human
Host:	Rabbit
Clonality:	Polyclonal
Immunogen:	The immunogen is a synthetic peptide directed towards the C terminal region of human CCKAR
Specificity:	<b>Expected reactivity:</b> Human
Formulation:	Liquid. Purified antibody supplied in 1x PBS buffer with 0.09% (w/v) sodium azide and 2% sucrose. <i>Note that this product is shipped as lyophilized powder to China customers.</i>
Concentration:	lot specific
Purification:	Affinity purified
Conjugation:	Unconjugated
Storage:	For short term use, store at 2-8°C up to 1 week. For long term storage, store at -20°C in small aliquots to prevent freeze-thaw cycles.
Stability:	Shelf life: one year from despatch.
Predicted Protein Size:	47 kDa
Gene Name:	cholecystokinin A receptor
Database Link:	<a href="#">NP_000721.1</a> <a href="#">Entrez Gene 886 Human</a> <a href="#">P32238</a>
Background:	This gene encodes a G-protein coupled receptor that binds non-sulfated members of the cholecystokinin (CCK) family of peptide hormones. This receptor is a major physiologic mediator of pancreatic enzyme secretion and smooth muscle contraction of the gallbladder and stomach. In the central and peripheral nervous system this receptor regulates satiety and the release of beta-endorphin and dopamine.
Synonyms:	CCK-A; CCK-AR; CCK1-R; CCKRA

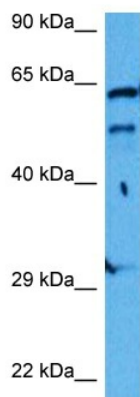


[View online >](#)

Protein Families: Druggable Genome, Transmembrane

Protein Pathways: Calcium signaling pathway, Neuroactive ligand-receptor interaction

### Product images:



Host: Rabbit

Target Name: CCKAR

Sample Type: Leiomyosarcoma Tumor Lysate

Antibody Dilution: 1.0 $\mu$ g/ml

Host: Rabbit

Target Name: CCKAR

Sample Tissue: Human Leiomyosarcoma Tumor lysates

Antibody Dilution: 1 ug/ml