

Product datasheet for **TA361419**

GGA2 Rabbit Polyclonal Antibody

Product data:

Product Type:	Primary Antibodies
Applications:	WB
Reactivity:	Human
Host:	Rabbit
Clonality:	Polyclonal
Immunogen:	The immunogen is a synthetic peptide directed towards the C terminal region of human GGA2
Specificity:	Expected reactivity: Human
Formulation:	Liquid. Purified antibody supplied in 1x PBS buffer with 0.09% (w/v) sodium azide and 2% sucrose. <i>Note that this product is shipped as lyophilized powder to China customers.</i>
Concentration:	lot specific
Purification:	Affinity purified
Conjugation:	Unconjugated
Storage:	For short term use, store at 2-8°C up to 1 week. For long term storage, store at -20°C in small aliquots to prevent freeze-thaw cycles.
Stability:	Shelf life: one year from despatch.
Predicted Protein Size:	67 kDa
Gene Name:	golgi associated, gamma adaptin ear containing, ARF binding protein 2
Database Link:	NP_055859.1 Entrez Gene 23062 Human Q9UJY4



[View online »](#)

Background:

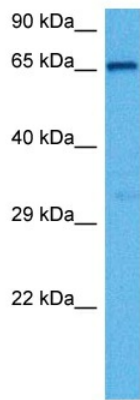
This gene encodes a member of the Golgi-localized, gamma adaptin ear-containing, ARF-binding (GGA) family. This family includes ubiquitous coat proteins that regulate the trafficking of proteins between the trans-Golgi network and the lysosome. These proteins share an amino-terminal VHS domain which mediates sorting of the mannose 6-phosphate receptors at the trans-Golgi network. They also contain a carboxy-terminal region with homology to the ear domain of gamma-adaptins. This family member may play a significant role in cargo molecules regulation and clathrin-coated vesicle assembly.

Synonyms:

FLJ20966; KIAA1080; VEAR

Protein Pathways:

Lysosome

Product images:


Host: Rabbit
 Target Name: GGA2
 Sample Type: Jurkat Cell Lysate
 Antibody Dilution: 1.0µg/ml

Host: Rabbit
 Target Name: GGA2
 Sample Tissue: Human Jurkat Whole Cell lysates
 Antibody Dilution: 1 µg/ml