

Product datasheet for **TA361417**

UBE4B Rabbit Polyclonal Antibody

Product data:

Product Type:	Primary Antibodies
Applications:	WB
Reactivity:	Human
Host:	Rabbit
Clonality:	Polyclonal
Immunogen:	The immunogen is a synthetic peptide directed towards the N terminal region of human UBE4B
Specificity:	Expected reactivity: Human
Formulation:	Liquid. Purified antibody supplied in 1x PBS buffer with 0.09% (w/v) sodium azide and 2% sucrose. <i>Note that this product is shipped as lyophilized powder to China customers.</i>
Concentration:	lot specific
Purification:	Affinity purified
Conjugation:	Unconjugated
Storage:	For short term use, store at 2-8°C up to 1 week. For long term storage, store at -20°C in small aliquots to prevent freeze-thaw cycles.
Stability:	Shelf life: one year from despatch.
Predicted Protein Size:	116 kDa
Gene Name:	ubiquitination factor E4B
Database Link:	NP_001099032.1 Entrez Gene 10277 Human O95155-3



[View online »](#)

Background:

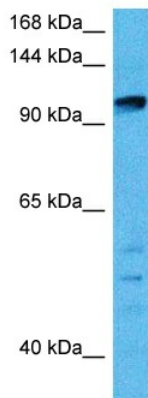
The modification of proteins with ubiquitin is an important cellular mechanism for targeting abnormal or short-lived proteins for degradation. Ubiquitination involves at least three classes of enzymes: ubiquitin-activating enzymes, or E1s, ubiquitin-conjugating enzymes, or E2s, and ubiquitin-protein ligases, or E3s. This gene encodes an additional conjugation factor, E4, which is involved in multiubiquitin chain assembly. This gene is also the strongest candidate in the neuroblastoma tumor suppressor genes. Alternatively spliced transcript variants encoding distinct isoforms have been found for this gene.

Synonyms:

E4; HDNB1; KIAA0684; UBOX3; UFD2

Protein Pathways:

Ubiquitin mediated proteolysis

Product images:

Host: Rabbit
Target Name: UBE4B
Sample Type: 293T Cell Lysate
Antibody Dilution: 1.0µg/ml

Host: Rabbit
Target Name: UBE4B
Sample Tissue: Human 293T Whole Cell lysates
Antibody Dilution: 1 µg/ml