

Product datasheet for **TA361415**

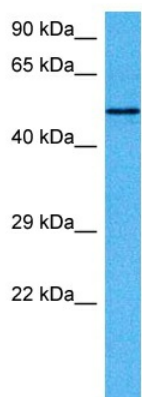
ATXN10 Rabbit Polyclonal Antibody

Product data:

Product Type:	Primary Antibodies
Applications:	WB
Reactivity:	Human
Host:	Rabbit
Clonality:	Polyclonal
Immunogen:	The immunogen is a synthetic peptide directed towards the middle region of human ATXN10
Specificity:	Expected reactivity: Human
Formulation:	Liquid. Purified antibody supplied in 1x PBS buffer with 0.09% (w/v) sodium azide and 2% sucrose. <i>Note that this product is shipped as lyophilized powder to China customers.</i>
Concentration:	lot specific
Purification:	Affinity purified
Conjugation:	Unconjugated
Storage:	For short term use, store at 2-8°C up to 1 week. For long term storage, store at -20°C in small aliquots to prevent freeze-thaw cycles.
Stability:	Shelf life: one year from despatch.
Predicted Protein Size:	52 kDa
Gene Name:	ataxin 10
Database Link:	NP_001161093.1 Entrez Gene 25814 Human Q9UBB4
Background:	This gene encodes a protein that may function in neuron survival, neuron differentiation, and neuritogenesis. These roles may be carried out via activation of the mitogen-activated protein kinase cascade. Expansion of a pentanucleotide repeat in an intronic region of this locus has been associated with spinocerebellar ataxia, type 10. Alternatively spliced transcript variants have been described.
Synonyms:	E46L; FLJ37990; HUMEEP; SCA10



[View online »](#)

Product images:

Host: Rabbit
Target Name: ATXN10
Sample Type: Mesenchymoma Tumor Lysate
Antibody Dilution: 1.0µg/ml

Host: Rabbit
Target Name: ATXN10
Sample Tissue: Human Mesenchymoma Tumor lysates
Antibody Dilution: 1 ug/ml