

## Product datasheet for **TA361414**

### UDP glucose dehydrogenase (UGDH) Rabbit Polyclonal Antibody

#### Product data:

|                         |                                                                                                                                                                                         |
|-------------------------|-----------------------------------------------------------------------------------------------------------------------------------------------------------------------------------------|
| Product Type:           | Primary Antibodies                                                                                                                                                                      |
| Applications:           | WB                                                                                                                                                                                      |
| Reactivity:             | Human                                                                                                                                                                                   |
| Host:                   | Rabbit                                                                                                                                                                                  |
| Clonality:              | Polyclonal                                                                                                                                                                              |
| Immunogen:              | The immunogen is a synthetic peptide directed towards the C terminal region of human UGDH                                                                                               |
| Specificity:            | <b>Expected reactivity:</b> Human                                                                                                                                                       |
| Formulation:            | Liquid. Purified antibody supplied in 1x PBS buffer with 0.09% (w/v) sodium azide and 2% sucrose.<br><i>Note that this product is shipped as lyophilized powder to China customers.</i> |
| Concentration:          | lot specific                                                                                                                                                                            |
| Purification:           | Affinity purified                                                                                                                                                                       |
| Conjugation:            | Unconjugated                                                                                                                                                                            |
| Storage:                | For short term use, store at 2-8°C up to 1 week. For long term storage, store at -20°C in small aliquots to prevent freeze-thaw cycles.                                                 |
| Stability:              | Shelf life: one year from despatch.                                                                                                                                                     |
| Predicted Protein Size: | 55 kDa                                                                                                                                                                                  |
| Gene Name:              | UDP-glucose 6-dehydrogenase                                                                                                                                                             |
| Database Link:          | <a href="#">NP_001171629.1</a><br><a href="#">Entrez Gene 7358 Human</a><br><a href="#">O60701</a>                                                                                      |



[View online »](#)

**Background:**

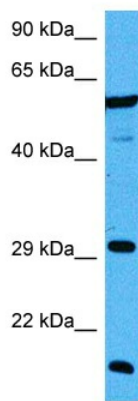
The protein encoded by this gene converts UDP-glucose to UDP-glucuronate and thereby participates in the biosynthesis of glycosaminoglycans such as hyaluronan, chondroitin sulfate, and heparan sulfate. These glycosylated compounds are common components of the extracellular matrix and likely play roles in signal transduction, cell migration, and cancer growth and metastasis. The expression of this gene is up-regulated by transforming growth factor beta and down-regulated by hypoxia. Alternative splicing results in multiple transcript variants.

**Synonyms:**

GDH; UDP-GlcDH; UDPGDH; UGD

**Protein Pathways:**

Amino sugar and nucleotide sugar metabolism, Ascorbate and aldarate metabolism, Metabolic pathways, Pentose and glucuronate interconversions, Starch and sucrose metabolism

**Product images:**

Host: Rabbit  
Target Name: UGDH  
Sample Type: 293T Cell Lysate  
Antibody Dilution: 1.0µg/ml

Host: Rabbit  
Target Name: UGDH  
Sample Tissue: Human 293T Whole Cell lysates  
Antibody Dilution: 1ug/ml