

## Product datasheet for **TA361413**

### EIF4EBP2 Rabbit Polyclonal Antibody

#### Product data:

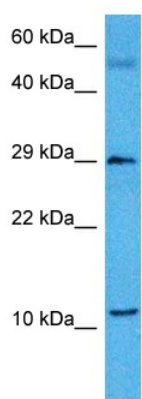
Product Type:	Primary Antibodies
Applications:	WB
Reactivity:	Human
Host:	Rabbit
Clonality:	Polyclonal
Immunogen:	The immunogen is a synthetic peptide directed towards the middle region of human EIF4EBP2
Specificity:	<b>Expected reactivity:</b> Human
Formulation:	Liquid. Purified antibody supplied in 1x PBS buffer with 0.09% (w/v) sodium azide and 2% sucrose. <i>Note that this product is shipped as lyophilized powder to China customers.</i>
Concentration:	lot specific
Purification:	Affinity purified
Conjugation:	Unconjugated
Storage:	For short term use, store at 2-8°C up to 1 week. For long term storage, store at -20°C in small aliquots to prevent freeze-thaw cycles.
Stability:	Shelf life: one year from despatch.
Predicted Protein Size:	13 kDa
Gene Name:	eukaryotic translation initiation factor 4E binding protein 2
Database Link:	<a href="#">NP_004087.1</a> <a href="#">Entrez Gene 1979 Human Q13542</a>
Background:	This gene encodes a member of the eukaryotic translation initiation factor 4E binding protein family. The gene products of this family bind eIF4E and inhibit translation initiation. However, insulin and other growth factors can release this inhibition via a phosphorylation-dependent disruption of their binding to eIF4E. Regulation of protein production through these gene products have been implicated in cell proliferation, cell differentiation and viral infection.
Synonyms:	4E-BP2; 4EBP2; PHASII



[View online »](#)

Protein Families: Transcription Factors

### Product images:



Host: Rabbit  
Target Name: EIF4EBP2  
Sample Type: Leiomyosarcoma Tumor Lysate  
Antibody Dilution: 1.0 $\mu$ g/ml

Host: Rabbit  
Target Name: EIF4EBP2  
Sample Tissue: Human Leiomyosarcoma Tumor lysates  
Antibody Dilution: 1 $\mu$ g/ml