

## Product datasheet for **TA361408**

### CD168 (HMMR) Rabbit Polyclonal Antibody

#### Product data:

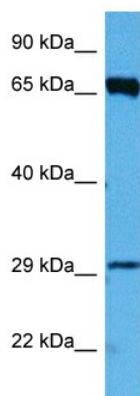
Product Type:	Primary Antibodies
Applications:	WB
Reactivity:	Human
Host:	Rabbit
Clonality:	Polyclonal
Immunogen:	The immunogen is a synthetic peptide directed towards the middle region of human HMMR
Specificity:	<b>Expected reactivity:</b> Human
Formulation:	Liquid. Purified antibody supplied in 1x PBS buffer with 0.09% (w/v) sodium azide and 2% sucrose. <i>Note that this product is shipped as lyophilized powder to China customers.</i>
Concentration:	lot specific
Purification:	Affinity purified
Conjugation:	Unconjugated
Storage:	For short term use, store at 2-8°C up to 1 week. For long term storage, store at -20°C in small aliquots to prevent freeze-thaw cycles.
Stability:	Shelf life: one year from despatch.
Predicted Protein Size:	70 kDa
Gene Name:	hyaluronan mediated motility receptor
Database Link:	<a href="#">NP_001136028.1</a> <a href="#">Entrez Gene 3161 Human</a> <a href="#">O75330-4</a>
Background:	The protein encoded by this gene is involved in cell motility. It is expressed in breast tissue and together with other proteins, it forms a complex with BRCA1 and BRCA2, thus is potentially associated with higher risk of breast cancer. Alternatively spliced transcript variants encoding different isoforms have been noted for this gene.
Synonyms:	CD168; IHABP; MGC119494; MGC119495; RHAMM
Protein Families:	Druggable Genome, Stem cell - Pluripotency



[View online »](#)

Protein Pathways: ECM-receptor interaction

### Product images:



Host: Rabbit  
Target Name: HMMR  
Sample Type: HepG2 Cell Lysate  
Antibody Dilution: 1.0 $\mu$ g/ml

Host: Rabbit  
Target Name: HMMR  
Sample Tissue: Human HepG2 Whole Cell lysates  
Antibody Dilution: 1 $\mu$ g/ml