

Product datasheet for **TA361407**

hSET1 (SETD1A) Rabbit Polyclonal Antibody

Product data:

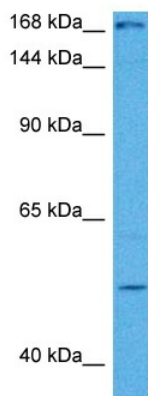
Product Type:	Primary Antibodies
Applications:	WB
Reactivity:	Human
Host:	Rabbit
Clonality:	Polyclonal
Immunogen:	The immunogen is a synthetic peptide directed towards the middle region of human SETD1A
Specificity:	Expected reactivity: Human
Formulation:	Liquid. Purified antibody supplied in 1x PBS buffer with 0.09% (w/v) sodium azide and 2% sucrose. <i>Note that this product is shipped as lyophilized powder to China customers.</i>
Concentration:	lot specific
Purification:	Affinity purified
Conjugation:	Unconjugated
Storage:	For short term use, store at 2-8°C up to 1 week. For long term storage, store at -20°C in small aliquots to prevent freeze-thaw cycles.
Stability:	Shelf life: one year from despatch.
Predicted Protein Size:	187 kDa
Gene Name:	SET domain containing 1A
Database Link:	NP_055527.1 Entrez Gene 9739 Human O15047
Background:	The protein encoded by this gene is a component of a histone methyltransferase (HMT) complex that produces mono-, di-, and trimethylated histone H3 at Lys4. The protein contains SET domains, a RNA recognition motif domain and is a member of the class V-like SAM-binding methyltransferase superfamily.
Synonyms:	hSET1A; KIAA0339; KMT2F; Set1; Set1A
Protein Families:	Druggable Genome



[View online »](#)

Protein Pathways: Lysine degradation

Product images:



Host: Rabbit
Target Name: SETD1A
Sample Type: DLD1 Cell Lysate
Antibody Dilution: 1.0 μ g/ml

Host: Rabbit
Target Name: SETD1A
Sample Tissue: Human DLD1 Whole Cell lysates
Antibody Dilution: 1 μ g/ml