

Product datasheet for **TA361406**

SA2 (STAG2) Rabbit Polyclonal Antibody

Product data:

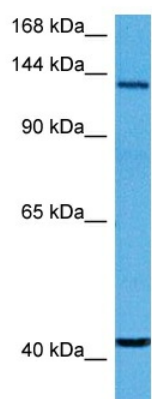
Product Type:	Primary Antibodies
Applications:	WB
Reactivity:	Human
Host:	Rabbit
Clonality:	Polyclonal
Immunogen:	The immunogen is a synthetic peptide directed towards the N terminal region of human STAG2
Specificity:	Expected reactivity: Human
Formulation:	Liquid. Purified antibody supplied in 1x PBS buffer with 0.09% (w/v) sodium azide and 2% sucrose. <i>Note that this product is shipped as lyophilized powder to China customers.</i>
Concentration:	lot specific
Purification:	Affinity purified
Conjugation:	Unconjugated
Storage:	For short term use, store at 2-8°C up to 1 week. For long term storage, store at -20°C in small aliquots to prevent freeze-thaw cycles.
Stability:	Shelf life: one year from despatch.
Predicted Protein Size:	135 kDa
Gene Name:	stromal antigen 2
Database Link:	NP_001036214.1 Entrez Gene 10735 Human Q8N3U4
Background:	The protein encoded by this gene is a subunit of the cohesin complex, which regulates the separation of sister chromatids during cell division. Targeted inactivation of this gene results in chromatid cohesion defects and aneuploidy, suggesting that genetic disruption of cohesin is a cause of aneuploidy in human cancer. Alternatively spliced transcript variants encoding different isoforms have been found for this gene.
Synonyms:	bA517O1.1; DKFZp686P168; DKFZp781H1753; FLJ25871; OTTHUMP00000081754; SA-2; SA2



[View online »](#)

Protein Pathways: Cell cycle

Product images:



Host: Rabbit
Target Name: STAG2
Sample Type: HepG2 Cell Lysate
Antibody Dilution: 1.0 μ g/ml

Host: Rabbit
Target Name: STAG2
Sample Tissue: Human HepG2 Whole Cell lysates
Antibody Dilution: 1 μ g/ml