

## Product datasheet for **TA361401**

### **MAGED1 Rabbit Polyclonal Antibody**

#### **Product data:**

Product Type:	Primary Antibodies
Applications:	WB
Reactivity:	Human
Host:	Rabbit
Clonality:	Polyclonal
Immunogen:	The immunogen is a synthetic peptide directed towards the middle region of human MAGED1
Specificity:	<b>Expected reactivity:</b> Human
Formulation:	Liquid. Purified antibody supplied in 1x PBS buffer with 0.09% (w/v) sodium azide and 2% sucrose. <i>Note that this product is shipped as lyophilized powder to China customers.</i>
Concentration:	lot specific
Purification:	Affinity purified
Conjugation:	Unconjugated
Storage:	For short term use, store at 2-8°C up to 1 week. For long term storage, store at -20°C in small aliquots to prevent freeze-thaw cycles.
Stability:	Shelf life: one year from despatch.
Predicted Protein Size:	85 kDa
Gene Name:	MAGE family member D1
Database Link:	<a href="#">NP_001005332.1</a> <a href="#">Entrez Gene 9500 Human Q9Y5V3</a>



[View online »](#)

**Background:**

This gene is a member of the melanoma antigen gene (MAGE) family. Most of the genes of this family encode tumor specific antigens that are not expressed in normal adult tissues except testis. Although the protein encoded by this gene shares strong homology with members of the MAGE family, it is expressed in almost all normal adult tissues. This gene has been demonstrated to be involved in the p75 neurotrophin receptor mediated programmed cell death pathway. Three transcript variants encoding two different isoforms have been found for this gene.

**Synonyms:**

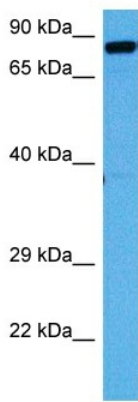
DLXIN-1; NRAGE; OTTHUMP00000023305

**Protein Families:**

Druggable Genome

**Protein Pathways:**

Neurotrophin signaling pathway

**Product images:**


Host: Rabbit  
 Target Name: MAGED1  
 Sample Type: Jurkat Cell Lysate  
 Antibody Dilution: 1.0µg/ml

Host: Rabbit  
 Target Name: MAGED1  
 Sample Tissue: Human Jurkat Whole Cell lysates  
 Antibody Dilution: 1 ug/ml